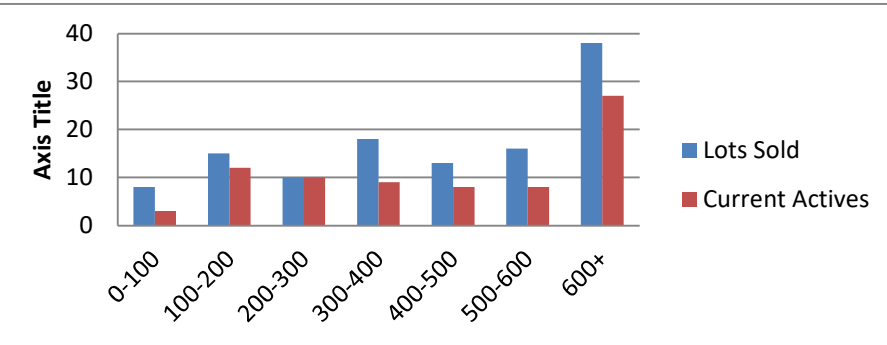


10-1-23 to 10-31-24 waterfront lots on Lake Keowee

	Units Sold	DOM Avg.	Total List Avg	Total Sold Avg	% List/Sale	Current Active	Supply/Yrs
0-100	8	107	\$93,475.00	\$83,563.00	89%	3	0.38
100-200	15	465	\$170,713.00	\$151,363.00	89%	12	0.80
200-300	10	87	\$291,773.00	\$267,985.00	92%	10	1.00
300-400	18	167	\$375,871.00	\$350,544.00	93%	9	0.50
400-500	13	175	\$497,962.00	\$464,615.00	93%	8	0.62
500-600	16	231	\$564,563.00	\$534,063.00	95%	8	0.50
600+	38	98	\$1,323,907.00	\$1,272,125.00	96%	27	0.71
<b>Totals</b>	<b>118</b>				<b>92%</b>	<b>77</b>	<b>0.65</b>



10-1-23 to 10-31-24 Waterfront Houses on Lake Keowee

In 1000's	Units Sold	DOM Avg.	List Avg	Sold Avg	List/Sale	Active	Supply/Yrs
200-400	7	60	\$324,368.00	\$316,500.00	98%	1	0.14
400-500	3	40	\$501,333.00	\$465,000.00	93%	1	0.33
500-600	3	46	\$569,559.00	\$509,000.00	89%	0	0.00
600-700	8	97	\$687,050.00	\$666,125.00	97%	2	0.25
700-800	5	120	\$787,560.00	\$772,940.00	98%	3	0.60
800-1000	15	64	\$992,847.00	\$907,127.00	91%	2	0.13
1000-1500	51	78	\$1,322,668.00	\$1,276,553.00	97%	9	0.18
1500-2000	42	88	\$1,842,670.00	\$1,763,339.00	96%	6	0.14
2000-up	69	99	\$3,425,914.00	\$3,250,096.00	95%	26	0.38
<b>Totals</b>	<b>203</b>				<b>95%</b>	<b>50</b>	<b>0.25</b>

