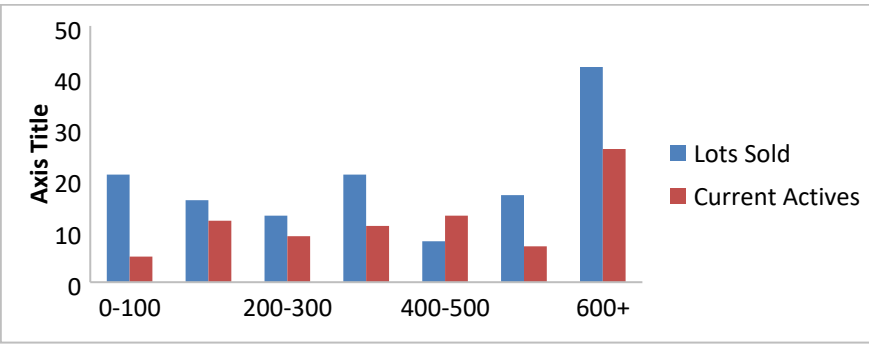


06-1-23 to 06-30-24 waterfront lots on Lake Keowee

	Units Sold	Total DOM Avg.	Total List Avg	Total Sold Avg	% List/Sale	Current Active	Supply/Yrs
0-100	21	229	\$76,419.00	\$62,833.00	82%	5	0.24
100-200	16	190	\$166,675.00	\$148,616.00	89%	12	0.75
200-300	13	101	\$291,253.00	\$264,223.00	91%	9	0.69
300-400	21	173	\$370,989.00	\$348,912.00	94%	11	0.52
400-500	8	197	\$464,063.00	\$450,500.00	97%	13	1.63
500-600	17	196	\$569,882.00	\$545,882.00	96%	7	0.41
600+	42	109	\$1,636,360.00	\$1,442,411.00	88%	26	0.62

Totals	138				91%	83	0.60
---------------	------------	--	--	--	------------	-----------	-------------



6-1-23 to 6-30-24 Waterfront Houses on Lake Keowee

In 1000's	Units Sold	DOM Avg.	List Avg	Sold Avg	List/Sale	Active	Supply/Yrs
200-400	9	73	\$320,709.00	\$313,167.00	98%	5	0.56
400-500	5	54	\$447,580.00	\$440,000.00	98%	0	0.00
500-600	2	27	\$554,838.00	\$513,500.00	93%	0	0.00
600-700	5	69	\$664,480.00	\$653,800.00	98%	3	0.60
700-800	5	85	\$794,180.00	\$782,740.00	99%	2	0.40
800-1000	20	81	\$987,175.00	\$908,600.00	92%	3	0.15
1000-1500	57	68	\$1,323,433.00	\$1,276,345.00	96%	7	0.12
1500-2000	50	80	\$1,815,543.00	\$1,735,835.00	96%	6	0.12
2000-up	62	98	\$3,201,570.00	\$3,061,655.00	96%	26	0.42

Totals	215				96%	52	0.24
---------------	------------	--	--	--	------------	-----------	-------------

