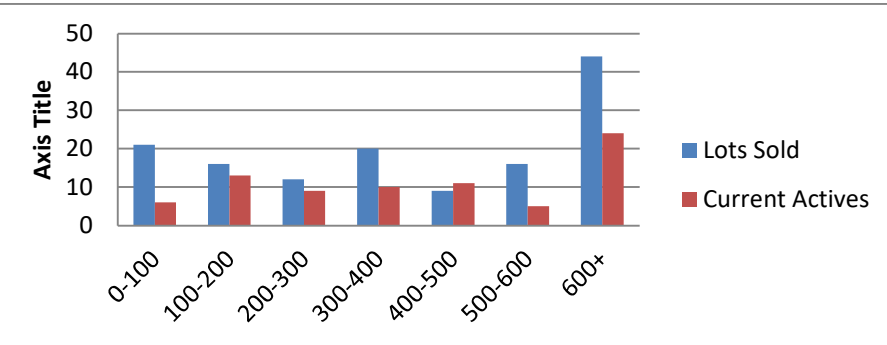


04-1-23 to 04-30-24 waterfront lots on Lake Keowee

	Units Sold	DOM Avg.	Total List Avg	Total Sold Avg	% List/Sale	Current Active	Supply/Yrs
0-100	21	243	\$74,038.00	\$60,405.00	82%	6	0.29
100-200	16	195	\$173,294.00	\$155,516.00	90%	13	0.81
200-300	12	109	\$292,199.00	\$262,500.00	90%	9	0.75
300-400	20	173	\$369,755.00	\$349,483.00	95%	10	0.50
400-500	9	148	\$476,333.00	\$461,000.00	97%	11	1.22
500-600	16	209	\$568,063.00	\$543,750.00	96%	5	0.31
600+	44	109	\$1,667,543.00	\$1,483,432.00	89%	24	0.55
Totals	138				91%	78	0.57



4-1-23 to 4-30-24 Waterfront Houses on Lake Keowee

In 1000's	Units Sold	DOM Avg.	List Avg	Sold Avg	List/Sale	Active	Supply/Yrs
200-400	11	69	\$317,989.00	\$311,545.00	98%	5	0.45
400-500	6	54	\$454,633.00	\$443,333.00	98%	0	0.00
500-600	2	27	\$554,838.00	\$513,500.00	93%	0	0.00
600-700	5	69	\$664,480.00	\$653,800.00	98%	0	0.00
700-800	5	85	\$794,180.00	\$782,740.00	99%	5	1.00
800-1000	20	71	\$980,680.00	\$909,050.00	93%	3	0.15
1000-1500	57	67	\$1,323,953.00	\$1,279,521.00	97%	3	0.05
1500-2000	53	80	\$1,810,668.00	\$1,730,788.00	96%	11	0.21
2000-up	57	99	\$3,141,725.00	\$2,999,319.00	95%	30	0.53
Totals	216				96%	57	0.26

