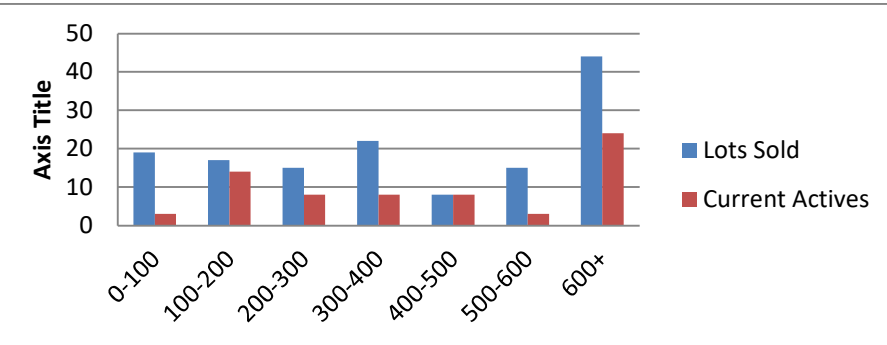


02-1-23 to 02-29-24 waterfront lots on Lake Keowee

	Units Sold	DOM Avg.	Total List Avg	Total Sold Avg	% List/Sale	Current Active	Supply/Yrs
0-100	19	259	\$70,226.00	\$56,395.00	80%	3	0.16
100-200	17	335	\$159,918.00	\$151,309.00	95%	14	0.82
200-300	15	137	\$285,752.00	\$260,987.00	91%	8	0.53
300-400	22	148	\$372,127.00	\$350,580.00	94%	8	0.36
400-500	8	91	\$466,750.00	\$456,125.00	98%	8	1.00
500-600	15	216	\$569,333.00	\$545,667.00	96%	3	0.20
600+	44	102	\$1,696,227.00	\$1,501,977.00	89%	24	0.55
<b>Totals</b>	<b>140</b>				<b>92%</b>	<b>68</b>	<b>0.49</b>



2-1-23 to 2-29-24 Waterfront Houses on Lake Keowee

In 1000's	Units Sold	DOM Avg.	List Avg	Sold Avg	List/Sale	Active	Supply/Yrs
200-400	7	81	\$312,743.00	\$305,214.00	98%	1	0.14
400-500	5	57	\$456,560.00	\$445,000.00	97%	0	0.00
500-600	1	28	\$595,000.00	\$525,000.00	88%	1	1.00
600-700	4	96	\$732,125.00	\$669,000.00	91%	0	0.00
700-800	7	93	\$788,986.00	\$775,814.00	98%	3	0.43
800-1000	18	78	\$992,705.00	\$911,672.00	92%	2	0.11
1000-1500	48	67	\$1,304,076.00	\$1,263,500.00	97%	2	0.04
1500-2000	48	77	\$1,800,629.00	\$1,723,531.00	96%	9	0.19
2000-up	62	103	\$3,097,949.00	\$2,943,652.00	95%	17	0.27
<b>Totals</b>	<b>200</b>				<b>95%</b>	<b>35</b>	<b>0.18</b>

