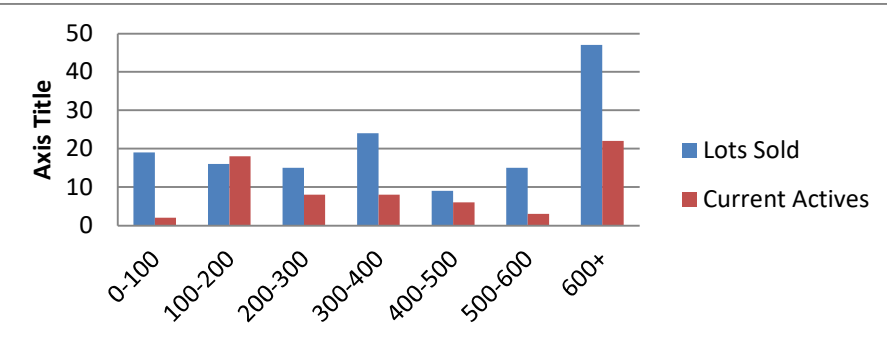


01-1-23 to 01-31-24 waterfront lots on Lake Keowee

	Units Sold	DOM Avg.	Total List Avg	Total Sold Avg	% List/Sale	Current Active	Supply/Yrs
0-100	19	265	\$71,753.00	\$57,316.00	80%	2	0.11
100-200	16	349	\$160,943.00	\$151,738.00	94%	18	1.13
200-300	15	137	\$285,752.00	\$260,987.00	91%	8	0.53
300-400	24	139	\$379,617.00	\$351,156.00	93%	8	0.33
400-500	9	91	\$462,111.00	\$449,889.00	97%	6	0.67
500-600	15	216	\$569,333.00	\$545,667.00	96%	3	0.20
600+	47	117	\$1,636,106.00	\$1,450,128.00	89%	22	0.47
Totals	145				91%	67	0.46



1-1-23 to 1-31-24 Waterfront Houses on Lake Keowee

In 1000's	Units Sold	DOM Avg.	List Avg	Sold Avg	List/Sale	Active	Supply/Yrs
200-400	8	81	\$318,525.00	\$308,938.00	97%	3	0.38
400-500	5	57	\$456,560.00	\$445,000.00	97%	0	0.00
500-600	1	28	\$595,000.00	\$525,000.00	88%	0	0.00
600-700	3	103	\$742,833.00	\$675,333.00	91%	0	0.00
700-800	8	114	\$789,113.00	\$775,713.00	98%	3	0.38
800-1000	17	73	\$1,001,158.00	\$917,535.00	92%	0	0.00
1000-1500	49	64	\$1,311,422.00	\$1,272,306.00	97%	3	0.06
1500-2000	49	77	\$1,794,984.00	\$1,718,576.00	96%	9	0.18
2000-up	60	100	\$3,116,814.00	\$2,964,357.00	95%	16	0.27
Totals	200				95%	34	0.17

