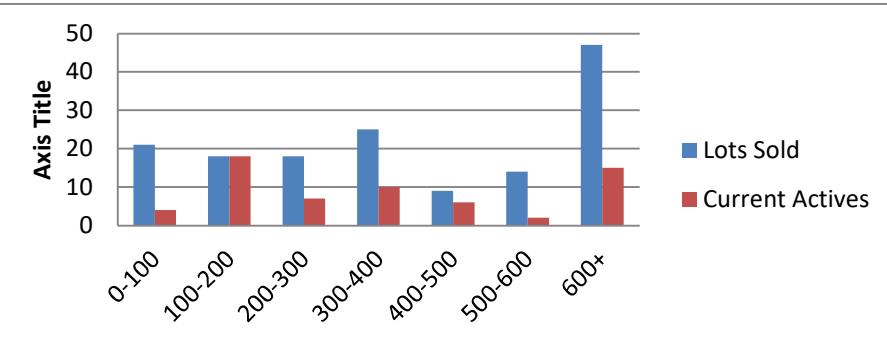


12-1-22 to 12-31-23 waterfront lots on Lake Keowee

	Units Sold	DOM Avg.	Total List Avg	Total Sold Avg	% List/Sale	Current Active	Supply/Yrs
0-100	21	261	\$71,300.00	\$57,190.00	80%	4	0.19
100-200	18	322	\$160,671.00	\$149,989.00	93%	18	1.00
200-300	18	168	\$281,171.00	\$258,744.00	92%	7	0.39
300-400	25	136	\$379,472.00	\$351,910.00	93%	10	0.40
400-500	9	91	\$462,111.00	\$449,889.00	97%	6	0.67
500-600	14	227	\$567,214.00	\$546,071.00	96%	2	0.14
600+	47	116	\$1,634,393.00	\$1,448,394.00	89%	15	0.32
Totals	152				92%	62	0.41



12-1-22 to 12-31-23 Waterfront Houses on Lake Keowee

In 1000's	Units Sold	DOM Avg.	List Avg	Sold Avg	List/Sale	Active	Supply/Yrs
200-400	8	81	\$318,525.00	\$308,938.00	97%	1	0.13
400-500	6	66	\$460,300.00	\$448,333.00	97%	0	0.00
500-600	1	28	\$595,000.00	\$525,000.00	88%	0	0.00
600-700	2	116	\$774,250.00	\$690,500.00	89%	2	1.00
700-800	7	111	\$787,571.00	\$772,257.00	98%	3	0.43
800-1000	18	71	\$992,760.00	\$914,339.00	92%	1	0.06
1000-1500	48	59	\$1,319,535.00	\$1,276,313.00	97%	4	0.08
1500-2000	51	76	\$1,796,512.00	\$1,719,041.00	96%	7	0.14
2000-up	60	99	\$3,105,408.00	\$2,951,274.00	95%	16	0.27
Totals	201				94%	34	0.17

