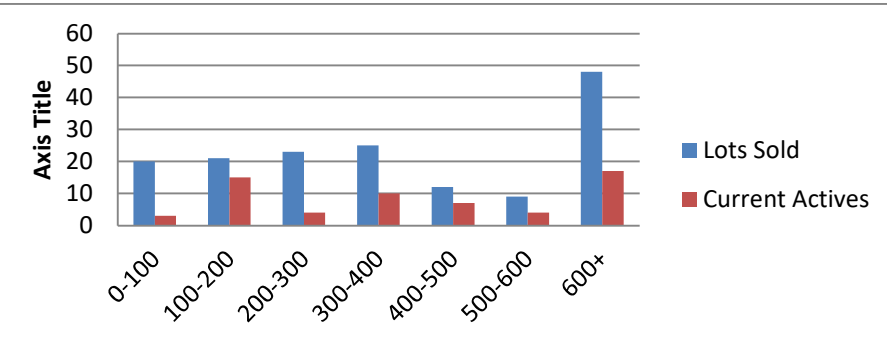


8-1-22 to 8-31-23 waterfront lots on Lake Keowee

	Units Sold	DOM Avg.	Total List Avg	Total Sold Avg	% List/Sale	Current Active	Supply/Yrs
0-100	20	143	\$73,275.00	\$58,220.00	79%	3	0.15
100-200	21	305	\$161,674.00	\$150,856.00	93%	15	0.71
200-300	23	192	\$271,225.00	\$253,539.00	93%	4	0.17
300-400	25	89	\$373,193.00	\$354,550.00	95%	10	0.40
400-500	12	115	\$467,667.00	\$449,500.00	96%	7	0.58
500-600	9	92	\$560,889.00	\$536,111.00	96%	4	0.44
600+	48	111	\$1,489,157.00	\$1,313,464.00	88%	17	0.35
Totals	158				92%	60	0.38



6-1-22 to 6-30-23 Waterfront Houses on Lake Keowee

In 1000's	Units Sold	DOM Avg.	List Avg	Sold Avg	List/Sale	Active	Supply/Yrs
200-400	9	73	\$321,467.00	\$313,722.00	98%	2	0.22
400-500	8	58	\$458,338.00	\$453,125.00	99%	0	0.00
500-600	1	70	\$579,000.00	\$567,000.00	98%	0	0.00
600-700	2	174	\$800,000.00	\$690,000.00	86%	1	0.50
700-800	9	104	\$776,889.00	\$759,789.00	98%	1	0.11
800-1000	24	66	\$978,816.00	\$907,031.00	93%	4	0.17
1000-1500	49	55	\$1,322,918.00	\$1,286,163.00	97%	7	0.14
1500-2000	55	74	\$1,768,173.00	\$1,701,111.00	96%	10	0.18
2000-up	66	83	\$3,056,089.00	\$2,901,301.00	FALSE	22	0.33
Totals	223				85%	47	0.21

