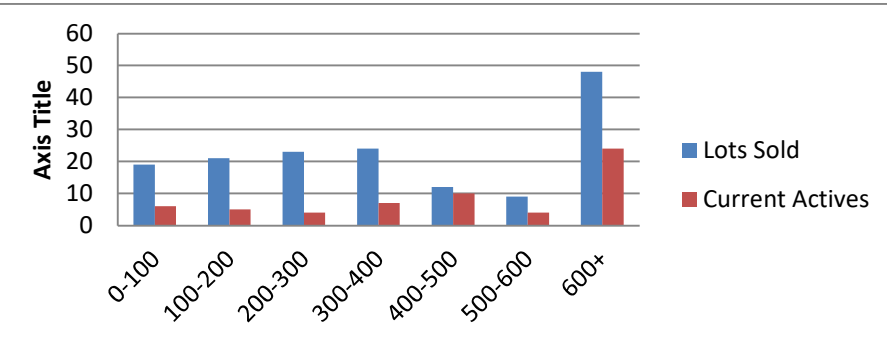


7-1-22 to 7-31-23 waterfront lots on Lake Keowee

	Units Sold	DOM Avg.	Total List Avg	Total Sold Avg	% List/Sale	Current Active	Supply/Yrs
0-100	19	142	\$71,542.00	\$61,495.00	86%	6	0.32
100-200	21	315	\$163,138.00	\$150,356.00	92%	5	0.24
200-300	23	192	\$273,360.00	\$256,583.00	94%	4	0.17
300-400	24	81	\$373,683.00	\$355,300.00	95%	7	0.29
400-500	12	117	\$462,224.00	\$445,333.00	96%	10	0.83
500-600	9	93	\$568,444.00	\$541,056.00	95%	4	0.44
600+	48	115	\$1,484,751.00	\$1,305,099.00	88%	24	0.50
Totals	156				92%	60	0.38



6-1-22 to 6-30-23 Waterfront Houses on Lake Keowee

In 1000's	Units Sold	DOM Avg.	List Avg	Sold Avg	List/Sale	Active	Supply/Yrs
200-400	7	70	\$308,043.00	\$301,214.00	98%	1	0.14
400-500	10	57	\$453,060.00	\$448,280.00	99%	0	0.00
500-600	1	70	\$579,000.00	\$567,000.00	98%	0	0.00
600-700	3	112	\$746,333.00	\$683,268.00	92%	0	0.00
700-800	7	117	\$776,286.00	\$755,600.00	97%	0	0.00
800-1000	24	67	\$979,662.00	\$908,281.00	93%	1	0.04
1000-1500	53	51	\$1,295,836.00	\$1,267,313.00	98%	4	0.08
1500-2000	57	67	\$1,759,048.00	\$1,703,857.00	97%	5	0.09
2000-up	67	90	\$3,180,241.00	\$2,970,000.00	93%	19	0.28
Totals	229				96%	30	0.13

