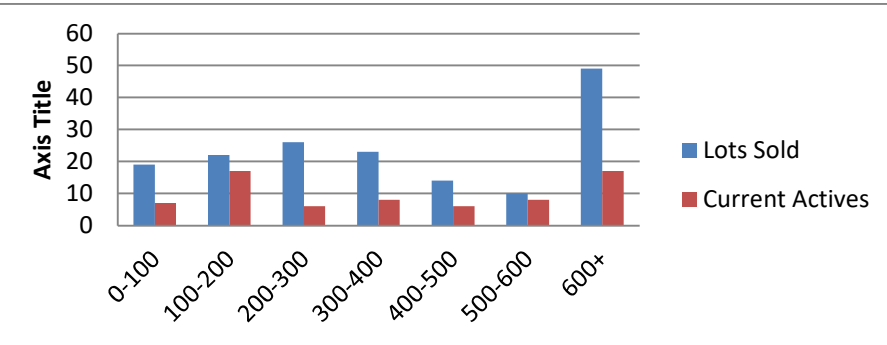


6-1-22 to 6-30-23 waterfront lots on Lake Keowee

	Units Sold	DOM Avg.	Total List Avg	Total Sold Avg	% List/Sale	Current Active	Supply/Yrs
0-100	19	137	\$71,542.00	\$61,495.00	86%	7	0.37
100-200	22	220	\$159,109.00	\$146,703.00	92%	17	0.77
200-300	26	180	\$270,631.00	\$257,896.00	95%	6	0.23
300-400	23	77	\$370,626.00	\$353,020.00	95%	8	0.35
400-500	14	124	\$464,013.00	\$447,786.00	97%	6	0.43
500-600	10	124	\$590,600.00	\$549,332.00	93%	8	0.80
600+	49	114	\$1,459,348.00	\$1,283,668.00	88%	17	0.35
Totals	163				92%	69	0.42



6-1-22 to 6-30-23 Waterfront Houses on Lake Keowee

In 1000's	Units Sold	DOM Avg.	List Avg	Sold Avg	List/Sale	Active	Supply/Yrs
200-400	8	67	\$301,275.00	\$294,813.00	98%	2	0.25
400-500	12	55	\$456,523.00	\$452,317.00	99%	1	0.08
500-600	1	70	\$579,000.00	\$567,000.00	98%	0	0.00
600-700	4	112	\$724,500.00	\$673,951.00	93%	0	0.00
700-800	11	93	\$763,255.00	\$750,619.00	98%	1	0.09
800-1000	23	63	\$963,604.00	\$906,076.00	94%	2	0.09
1000-1500	56	50	\$1,280,274.00	\$1,251,871.00	98%	5	0.09
1500-2000	51	69	\$1,759,951.00	\$1,729,900.00	98%	7	0.14
2000-up	68	90	\$3,105,488.00	\$2,930,128.00	94%	22	0.32
Totals	234				97%	40	0.17

