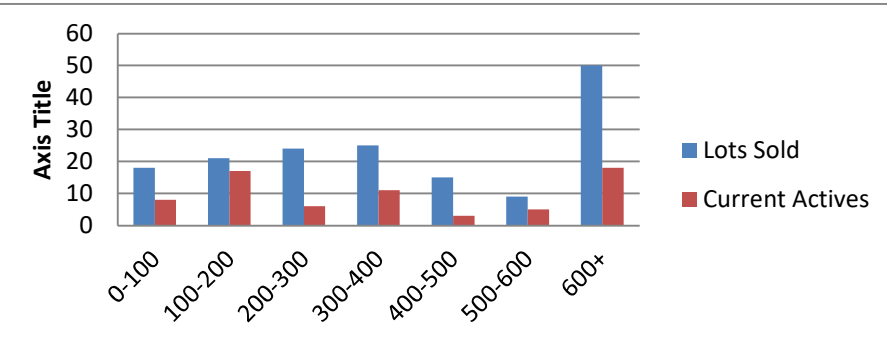


5-1-22 to 5-31-23 waterfront lots on Lake Keowee

	Units Sold	DOM Avg.	Total List Avg	Total Sold Avg	% List/Sale	Current Active	Supply/Yrs
0-100	18	188	\$70,544.00	\$62,258.00	88%	8	0.44
100-200	21	229	\$157,400.00	\$147,170.00	94%	17	0.81
200-300	24	196	\$266,725.00	\$256,033.00	96%	6	0.25
300-400	25	73	\$373,008.00	\$357,818.00	96%	11	0.44
400-500	15	117	\$465,612.00	\$450,467.00	97%	3	0.20
500-600	9	134	\$590,111.00	\$569,000.00	96%	5	0.56
600+	50	99	\$1,201,661.00	\$1,157,555.00	96%	18	0.36
Totals	162				95%	68	0.42



5-1-22 - 5-31-23 Waterfront Houses on Lake Keowee

In 1000's	Units Sold	DOM Avg.	List Avg	Sold Avg	List/Sale	Active	Supply/Yrs
200-400	8	67	\$301,275.00	\$294,813.00	98%	2	0.25
400-500	12	53	\$458,190.00	\$453,483.00	99%	1	0.08
500-600	1	70	\$579,000.00	\$567,000.00	98%	0	0.00
600-700	6	83	\$699,483.00	\$676,167.00	97%	0	0.00
700-800	12	88	\$757,900.00	\$746,401.00	98%	1	0.08
800-1000	22	49	\$950,804.00	\$899,000.00	95%	2	0.09
1000-1500	52	51	\$1,275,749.00	\$1,257,500.00	99%	5	0.10
1500-2000	48	63	\$1,759,513.00	\$1,724,500.00	98%	6	0.13
2000-up	70	86	\$3,046,904.00	\$2,797,500.00	92%	21	0.30
Totals	231				97%	38	0.16

