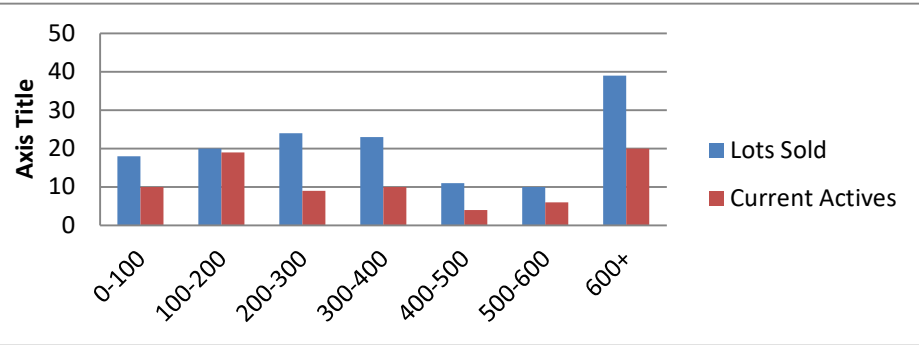


4-1-22 to 3-31-23 waterfront lots on Lake Keowee

	Units Sold	DOM Avg.	Total List Avg	Total Sold Avg	% List/Sale	Current Active	Supply/Yrs
0-100	18	204	\$72,172.00	\$62,147.00	86%	10	0.56
100-200	20	239	\$163,089.00	\$149,709.00	92%	19	0.95
200-300	24	196	\$266,271.00	\$255,829.00	96%	9	0.38
300-400	23	94	\$370,043.00	\$359,759.00	97%	10	0.43
400-500	11	130	\$475,017.00	\$455,727.00	96%	4	0.36
500-600	10	117	\$582,600.00	\$544,232.00	93%	6	0.60
600+	39	92	\$1,107,723.00	\$1,070,051.00	97%	20	0.51
Totals	145				94%	78	0.54



4-1-22 - 3-31-23 Waterfront Houses on Lake Keowee

In 1000's	Units Sold	DOM Avg.	List Avg	Sold Avg	List/Sale	Active	Supply/Yrs
200-400	5	62	\$304,740.00	\$298,000.00	98%	3	0.60
400-500	2	19	\$439,500.00	\$440,150.00	100%	1	0.50
500-600	0	0	\$1.00	\$1.00	100%	0	#DIV/0!
600-700	6	83	\$699,483.00	\$676,167.00	97%	0	0.00
700-800	12	77	\$761,233.00	\$751,734.00	99%	0	0.00
800-1000	18	42	\$923,061.00	\$899,300.00	97%	6	0.33
1000-1500	45	45	\$1,258,707.00	\$1,235,892.00	98%	6	0.13
1500-2000	40	61	\$1,752,940.00	\$1,719,957.00	98%	8	0.20
2000-up	60	76	\$3,153,927.00	\$2,990,743.00	95%	26	0.43
Totals	188				98%	50	0.27

