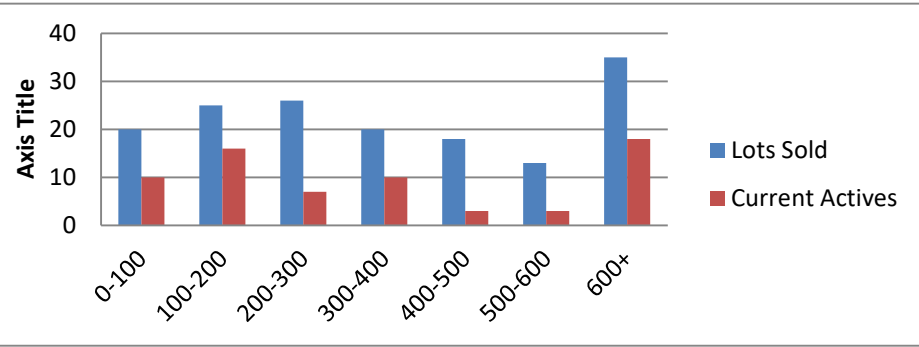


12-1-21--11-30-22 Waterfront Lots on Lake Keowee

	Units Sold	DOM Avg.	Total List Avg	Total Sold Avg	% List/Sale	Current Active	Supply/Yrs
0-100	20	194	\$68,600.00	\$60,708.00	88%	10	0.50
100-200	25	159	\$167,216.00	\$156,011.00	93%	16	0.64
200-300	26	158	\$267,450.00	\$256,454.00	96%	7	0.27
300-400	20	128	\$360,574.00	\$349,223.00	97%	10	0.50
400-500	18	109	\$467,398.00	\$452,722.00	97%	3	0.17
500-600	13	113	\$589,385.00	\$553,563.00	94%	3	0.23
600+	35	72	\$1,009,018.00	\$953,162.00	94%	18	0.51
Totals	157				94%	67	0.43



12-1-21--11-30-22 Waterfront Houses on Lake Keowee

In 1000's	Units Sold	DOM Avg.	List Avg	Sold Avg	List/Sale	Active	Supply/Yrs
200-400	6	57	\$277,350.00	\$273,317.00	99%	3	0.50
400-500	1	37	\$419,000.00	\$420,300.00	100%	0	0.00
500-600	2	56	\$604,500.00	\$585,500.00	97%	0	0.00
600-700	6	67	\$670,983.00	\$674,334.00	100%	0	0.00
700-800	10	77	\$754,580.00	\$746,381.00	99%	1	0.10
800-1000	26	35	\$912,150.00	\$902,342.00	99%	2	0.08
1000-1500	47	41	\$1,238,994.00	\$1,219,956.00	98%	9	0.19
1500-2000	41	57	\$1,716,729.00	\$1,692,907.00	99%	12	0.29
2000-up	59	63	\$3,257,556.00	\$3,102,529.00	95%	25	0.42
Totals	198				98%	52	0.26

