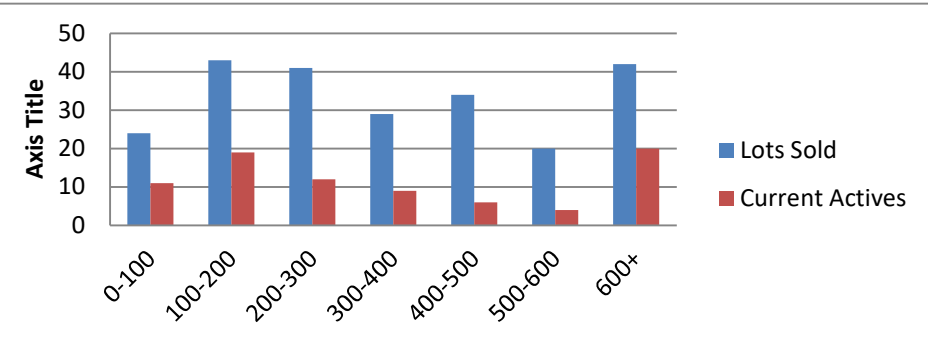


8-1-21--8-31-22 Waterfront Lots on Lake Keowee

	Units Sold	DOM Avg.	Total List Avg	Total Sold Avg	% List/Sale	Current Active	Supply/Yrs
0-100	24	229	\$70,775.00	\$63,094.00	89%	11	0.46
100-200	43	216	\$170,354.00	\$157,844.00	93%	19	0.44
200-300	41	148	\$267,315.00	\$255,359.00	96%	12	0.29
300-400	29	164	\$360,489.00	\$347,891.00	97%	9	0.31
400-500	34	119	\$475,804.00	\$460,453.00	97%	6	0.18
500-600	20	114	\$574,274.00	\$549,816.00	96%	4	0.20
600+	42	98	\$1,052,088.00	\$994,099.00	94%	20	0.48
Totals	233				94%	81	0.35



8-1-21--8-31-22 Waterfront Houses on Lake Keowee

In 1000's	Units Sold	DOM Avg.	List Avg	Sold Avg	List/Sale	Active	Supply/Yrs
200-400	7	58	\$272,886.00	\$268,629.00	98%	2	0.29
400-500	2	24	\$452,000.00	\$440,150.00	97%	0	0.00
500-600	4	39	\$570,875.00	\$558,000.00	98%	0	0.00
600-700	12	44	\$646,675.00	\$658,334.00	102%	0	0.00
700-800	19	65	\$745,695.00	\$752,243.00	101%	0	0.00
800-1000	32	33	\$902,359.00	\$893,200.00	99%	2	0.06
1000-1500	65	43	\$1,257,175.00	\$1,230,876.00	98%	8	0.12
1500-2000	43	74	\$1,716,649.00	\$1,669,743.00	97%	7	0.16
2000-up	59	60	\$3,227,516.00	\$3,122,392.00	97%	33	0.56
Totals	243				99%	52	0.21

