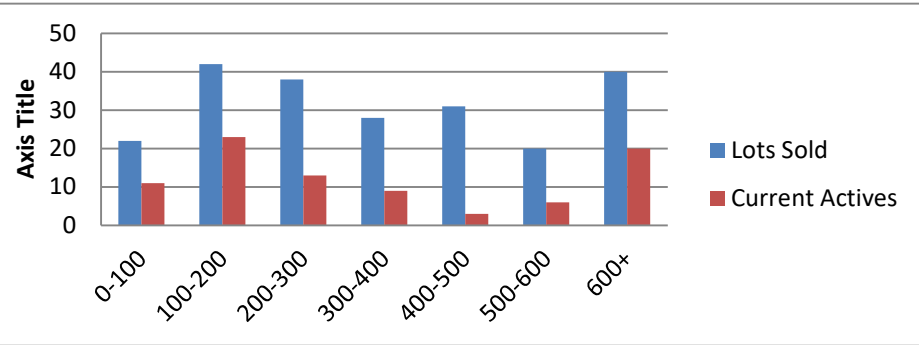


8-1-21--7-31-22 Waterfront Lots on Lake Keowee

	Units Sold	DOM Avg.	Total List Avg	Total Sold Avg	% List/Sale	Current Active	Supply/Yrs
0-100	22	245	\$70,168.00	\$62,330.00	89%	11	0.50
100-200	42	221	\$169,648.00	\$156,840.00	92%	23	0.55
200-300	38	139	\$268,313.00	\$255,782.00	95%	13	0.34
300-400	28	167	\$358,721.00	\$346,030.00	96%	9	0.32
400-500	31	119	\$476,398.00	\$461,787.00	97%	3	0.10
500-600	20	114	\$574,274.00	\$549,816.00	96%	6	0.30
600+	40	101	\$1,057,320.00	\$998,435.00	94%	20	0.50
Totals	221				94%	85	0.38



8-1-21--7-31-22 Waterfront Houses on Lake Keowee

In 1000's	Units Sold	DOM Avg.	List Avg	Sold Avg	List/Sale	Active	Supply/Yrs
200-400	5	51	\$264,260.00	\$257,080.00	97%	0	0.00
400-500	2	24	\$452,000.00	\$440,150.00	97%	0	0.00
500-600	4	39	\$570,875.00	\$558,000.00	98%	0	0.00
600-700	12	44	\$646,675.00	\$658,334.00	102%	0	0.00
700-800	18	64	\$742,733.00	\$751,812.00	101%	1	0.06
800-1000	30	32	\$901,353.00	\$893,413.00	99%	2	0.07
1000-1500	61	44	\$1,254,778.00	\$1,229,786.00	98%	6	0.10
1500-2000	39	76	\$1,722,282.00	\$1,673,691.00	97%	7	0.18
2000-up	51	63	\$3,239,138.00	\$3,126,543.00	97%	26	0.51
Totals	222				98%	42	0.19

