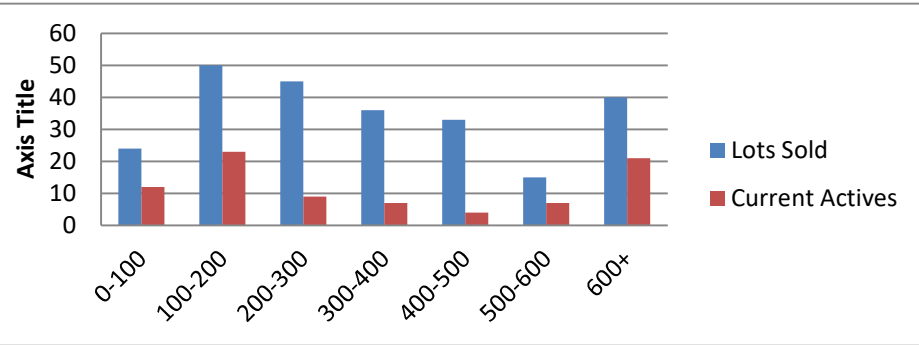


6-1-21--5-31-22 Waterfront Lots on Lake Keowee

	Units Sold	DOM Avg.	Total List Avg	Total Sold Avg	% List/Sale	Current Active	Supply/Yrs
0-100	24	207	\$71,258.00	\$62,798.00	88%	12	0.50
100-200	50	249	\$172,840.00	\$161,154.00	93%	23	0.46
200-300	45	174	\$266,480.00	\$252,071.00	95%	9	0.20
300-400	36	153	\$361,820.00	\$346,614.00	96%	7	0.19
400-500	33	151	\$474,671.00	\$457,142.00	96%	4	0.12
500-600	15	109	\$558,498.00	\$545,533.00	98%	7	0.47
600+	40	109	\$978,745.00	\$928,833.00	95%	21	0.53
Totals	243				94%	83	0.34



6-1-21--5-31-22 Waterfront Houses on Lake Keowee

In 1000's	Units Sold	DOM Avg.	List Avg	Sold Avg	List/Sale	Active	Supply/Yrs
200-400	6	42	\$250,217.00	\$245,067.00	98%	0	0.00
400-500	1	11	\$485,000.00	\$460,000.00	95%	1	1.00
500-600	5	43	\$573,700.00	\$561,400.00	98%	0	0.00
600-700	14	40	\$643,400.00	\$654,229.00	102%	0	0.00
700-800	15	66	\$742,427.00	\$754,933.00	102%	2	0.13
800-1000	37	30	\$899,227.00	\$888,035.00	99%	5	0.14
1000-1500	58	47	\$1,272,750.00	\$1,244,181.00	98%	1	0.02
1500-2000	36	93	\$1,723,131.00	\$1,665,604.00	97%	5	0.14
2000-up	48	56	\$3,040,896.00	\$2,971,062.00	98%	19	0.40
Totals	220				98%	33	0.15

