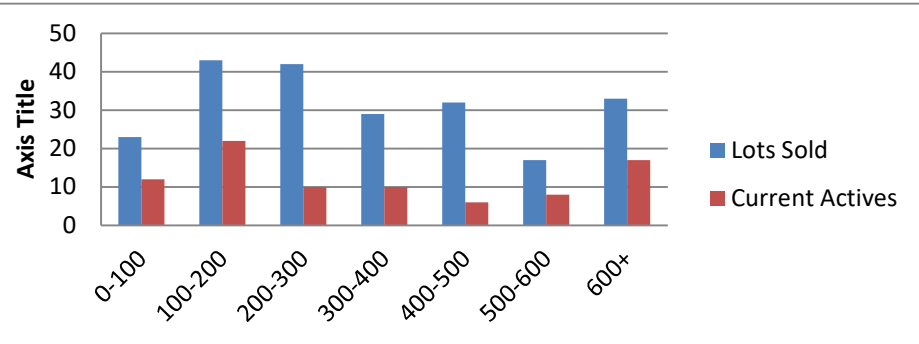


7-1-21--6-30-22 Waterfront Lots on Lake Keowee

	Units Sold	DOM Avg.	Total List Avg	Total Sold Avg	% List/Sale	Current Active	Supply/Yrs
0-100	23	233	\$67,856.00	\$60,398.00	89%	12	0.52
100-200	43	230	\$167,502.00	\$155,809.00	93%	22	0.51
200-300	42	181	\$264,731.00	\$251,648.00	95%	10	0.24
300-400	29	176	\$364,765.00	\$348,393.00	96%	10	0.34
400-500	32	127	\$476,458.00	\$460,178.00	97%	6	0.19
500-600	17	99	\$569,263.00	\$547,824.00	96%	8	0.47
600+	33	90	\$877,176.00	\$830,648.00	95%	17	0.52
Totals	219				94%	85	0.39



7-1-21--6-30-22 Waterfront Houses on Lake Keowee

In 1000's	Units Sold	DOM Avg.	List Avg	Sold Avg	List/Sale	Active	Supply/Yrs
200-400	5	51	\$264,260.00	\$257,080.00	97%	1	0.20
400-500	1	11	\$485,000.00	\$460,000.00	95%	0	0.00
500-600	4	39	\$570,875.00	\$558,000.00	98%	0	0.00
600-700	15	43	\$644,440.00	\$653,680.00	101%	0	0.00
700-800	18	64	\$742,733.00	\$751,812.00	101%	2	0.11
800-1000	32	31	\$897,453.00	\$887,200.00	99%	4	0.13
1000-1500	58	48	\$1,264,405.00	\$1,235,250.00	98%	0	0.00
1500-2000	36	80	\$1,713,689.00	\$1,654,632.00	97%	8	0.22
2000-up	50	57	\$3,003,360.00	\$2,927,119.00	97%	22	0.44
Totals	219				98%	37	0.17

