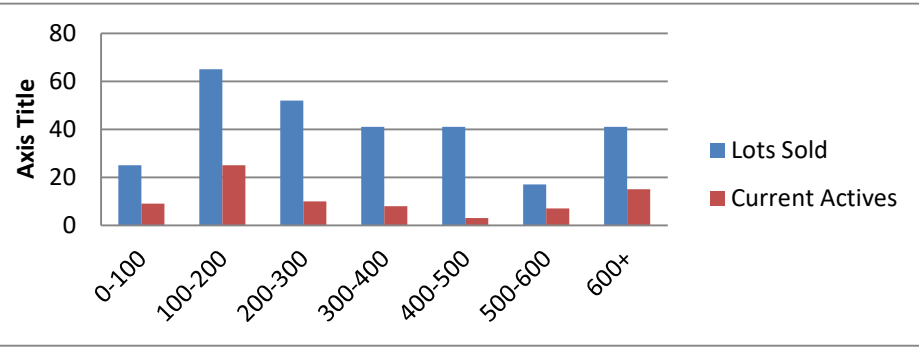


4-1-21--3-31-22 Waterfront Lots on Lake Keowee

	Units Sold	DOM Avg.	Total List Avg	Total Sold Avg	% List/Sale	Current Active	Supply/Yrs
0-100	25	184	\$69,230.00	\$62,802.00	91%	9	0.36
100-200	65	313	\$172,259.00	\$161,190.00	94%	25	0.38
200-300	52	187	\$265,870.00	\$254,204.00	96%	10	0.19
300-400	41	211	\$358,192.00	\$341,685.00	95%	8	0.20
400-500	41	179	\$474,270.00	\$457,188.00	96%	3	0.07
500-600	17	106	\$560,969.00	\$547,529.00	98%	7	0.41
600+	41	115	\$958,180.00	\$904,953.00	94%	15	0.37
Totals	282				95%	77	0.27



4-1-22--3-31-22 Waterfront Houses on Lake Keowee

In 1000's	Units Sold	DOM Avg.	List Avg	Sold Avg	List/Sale	Active	Supply/Yrs
200-400	10	45	\$262,780.00	\$258,440.00	98%	0	0.00
400-500	1	11	\$485,000.00	\$460,000.00	95%	0	0.00
500-600	6	38	\$578,083.00	\$559,500.00	97%	0	0.00
600-700	14	40	\$653,407.00	\$654,500.00	100%	0	0.00
700-800	15	65	\$737,093.00	\$750,333.00	102%	1	0.07
800-1000	35	31	\$897,514.00	\$887,136.00	99%	3	0.09
1000-1500	59	45	\$1,291,502.00	\$1,260,207.00	98%	3	0.05
1500-2000	38	89	\$1,753,496.00	\$1,671,065.00	95%	2	0.05
2000-up	44	75	\$3,046,882.00	\$2,973,032.00	98%	11	0.25
Totals	222				98%	20	0.09

