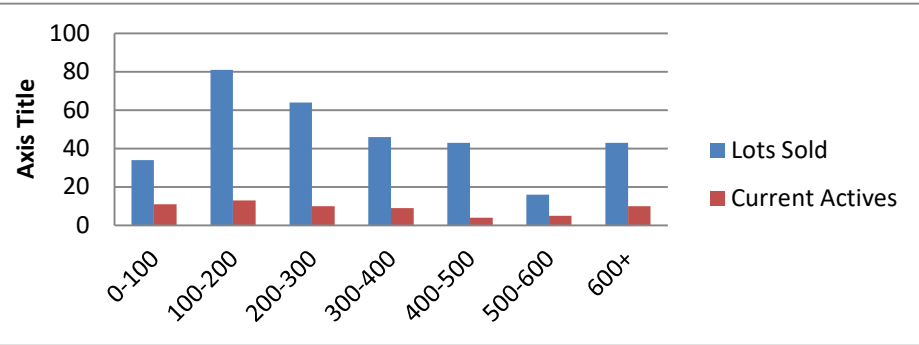


2-1-21--1-31-22 Waterfront Lots on Lake Keowee

	Units Sold	DOM Avg.	Total List Avg	Total Sold Avg	% List/Sale	Current Active	Supply/Yrs
0-100	34	280	\$68,084.00	\$61,731.00	91%	11	0.32
100-200	81	375	\$173,751.00	\$161,277.00	93%	13	0.16
200-300	64	182	\$269,745.00	\$253,752.00	94%	10	0.16
300-400	46	227	\$359,682.00	\$334,702.00	93%	9	0.20
400-500	43	205	\$474,986.00	\$457,179.00	96%	4	0.09
500-600	16	127	\$558,648.00	\$544,619.00	97%	5	0.31
600+	43	132	\$903,823.00	\$858,507.00	95%	10	0.23
Totals	327				94%	62	0.19



2-1-21--1-31-22 Waterfront Houses on Lake Keowee

In 1000's	Units Sold	DOM Avg.	List Avg	Sold Avg	List/Sale	Active	Supply/Yrs
200-400	10	45	\$262,780.00	\$258,440.00	98%	0	0.00
400-500	2	18	\$487,000.00	\$471,000.00	97%	0	0.00
500-600	8	40	\$584,675.00	\$555,250.00	95%	0	0.00
600-700	15	52	\$654,447.00	\$653,067.00	100%	1	0.07
700-800	16	50	\$731,963.00	\$749,688.00	102%	2	0.13
800-1000	40	38	\$902,450.00	\$887,224.00	98%	2	0.05
1000-1500	60	45	\$1,297,085.00	\$1,266,017.00	98%	4	0.07
1500-2000	41	86	\$1,764,237.00	\$1,692,990.00	96%	4	0.10
2000-up	38	94	\$2,939,774.00	\$2,880,685.00	98%	11	0.29
Totals	230				98%	24	0.10

