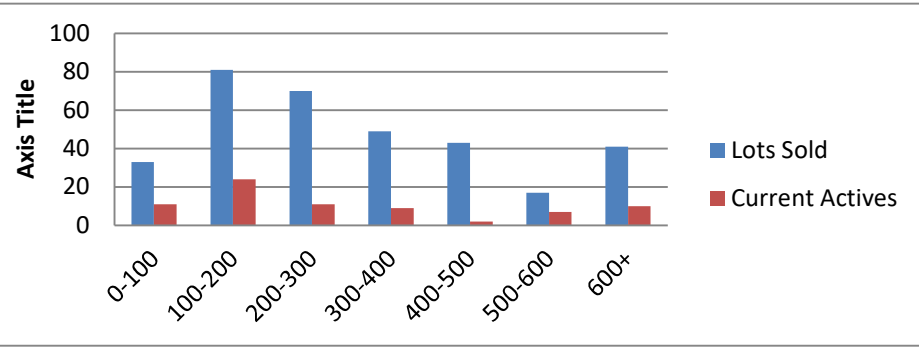


1--1-21--12-31-21 Waterfront Lots on Lake Keowee

	Units Sold	DOM Avg.	Total List Avg	Total Sold Avg	% List/Sale	Current Active	Supply/Yrs
0-100	33	33	\$69,256.00	\$63,147.00	91%	11	0.33
100-200	81	372	\$174,910.00	\$162,468.00	93%	24	0.30
200-300	70	182	\$268,749.00	\$253,701.00	94%	11	0.16
300-400	49	224	\$354,802.00	\$342,392.00	97%	9	0.18
400-500	43	204	\$475,568.00	\$457,412.00	96%	2	0.05
500-600	17	139	\$556,904.00	\$543,700.00	98%	7	0.41
600+	41	124	\$821,448.00	\$792,885.00	97%	10	0.24
Totals	334				95%	74	0.22



1-1-21--12-31-21 Waterfront Houses on Lake Keowee

In 1000's	Units Sold	DOM Avg.	List Avg	Sold Avg	List/Sale	Active	Supply/Yrs
200-400	10	33	\$259,830.00	\$256,640.00	99%	0	0.00
400-500	3	31	\$499,667.00	\$474,667.00	95%	0	0.00
500-600	10	38	\$573,640.00	\$556,700.00	97%	0	0.00
600-700	15	52	\$654,447.00	\$653,067.00	100%	1	0.07
700-800	18	51	\$740,522.00	\$752,500.00	102%	2	0.11
800-1000	41	42	\$910,861.00	\$892,231.00	98%	2	0.05
1000-1500	55	47	\$1,294,658.00	\$1,265,291.00	98%	4	0.07
1500-2000	39	97	\$1,764,838.00	\$1,698,656.00	96%	4	0.10
2000-up	40	98	\$2,930,410.00	\$2,857,900.00	98%	7	0.18
Totals	231				98%	20	0.09

