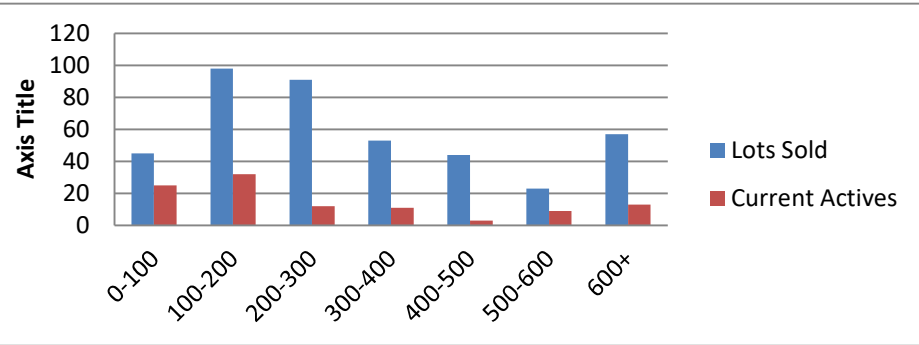


10--1-20--9-30-21 Waterfront Lots on Lake Keowee

	Units Sold	DOM Avg.	Total List Avg	Total Sold Avg	% List/Sale	Current Active	Supply/Yrs
0-100	45	393	\$70,508.00	\$63,019.00	89%	25	0.56
100-200	98	343	\$170,818.00	\$158,347.00	93%	32	0.33
200-300	91	188	\$262,061.00	\$249,819.00	95%	12	0.13
300-400	53	227	\$359,966.00	\$345,415.00	96%	11	0.21
400-500	44	217	\$478,030.00	\$457,380.00	96%	3	0.07
500-600	23	141	\$549,902.00	\$536,473.00	98%	9	0.39
600+	57	140	\$837,933.00	\$805,986.00	96%	13	0.23
<b>Totals</b>	<b>411</b>				<b>95%</b>	<b>105</b>	<b>0.26</b>



10-1-20--9-30-21 Waterfront Houses on Lake Keowee

In 1000's	Units Sold	DOM Avg.	List Avg	Sold Avg	List/Sale	Active	Supply/Yrs
200-400	14	44	\$288,336.00	\$286,850.00	99%	1	0.07
400-500	4	141	\$479,725.00	\$455,250.00	95%	0	0.00
500-600	13	40	\$572,800.00	\$552,796.00	97%	1	0.08
600-700	24	62	\$667,992.00	\$665,737.00	100%	2	0.08
700-800	20	63	\$761,815.00	\$752,550.00	99%	1	0.05
800-1000	56	66	\$899,377.00	\$884,637.00	98%	0	0.00
1000-1500	61	68	\$1,320,098.00	\$1,270,419.00	96%	5	0.08
1500-2000	40	89	\$1,777,871.00	\$1,725,625.00	97%	1	0.03
2000-up	39	107	\$2,839,474.00	\$2,736,420.00	96%	12	0.31
<b>Totals</b>	<b>271</b>				<b>97%</b>	<b>23</b>	<b>0.08</b>

