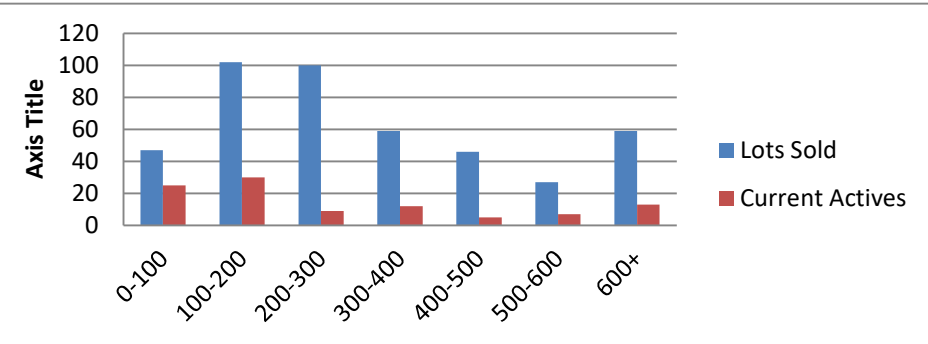


9-1-20--8-31-21 Waterfront Lots on Lake Keowee

	Units Sold	DOM Avg.	Total List Avg	Total Sold Avg	% List/Sale	Current Active	Supply/Yrs
0-100	47	381	\$70,654.00	\$63,272.00	90%	25	0.53
100-200	102	337	\$169,804.00	\$157,952.00	93%	30	0.29
200-300	100	193	\$262,224.00	\$249,598.00	95%	9	0.09
300-400	59	223	\$362,071.00	\$346,237.00	96%	12	0.20
400-500	46	281	\$475,514.00	\$453,713.00	95%	5	0.11
500-600	27	166	\$564,102.00	\$539,866.00	96%	7	0.26
600+	59	144	\$834,935.00	\$802,859.00	96%	13	0.22
<b>Totals</b>	<b>440</b>				<b>94%</b>	<b>101</b>	<b>0.23</b>



9-1-20--8-31-21 Waterfront Houses on Lake Keowee

In 1000's	Units Sold	DOM Avg.	List Avg	Sold Avg	List/Sale	Active	Supply/Yrs
200-400	14	44	\$288,336.00	\$286,850.00	99%	0	0.00
400-500	4	141	\$479,725.00	\$455,250.00	95%	0	0.00
500-600	19	75	\$578,821.00	\$558,784.00	97%	1	0.05
600-700	27	66	\$665,610.00	\$661,073.00	99%	3	0.11
700-800	21	54	\$755,742.00	\$749,667.00	99%	2	0.10
800-1000	62	78	\$907,653.00	\$889,944.00	98%	1	0.02
1000-1500	71	82	\$1,315,456.00	\$1,264,955.00	96%	5	0.07
1500-2000	40	112	\$1,795,187.00	\$1,739,440.00	97%	4	0.10
2000-up	36	115	\$2,689,736.00	\$2,591,288.00	96%	10	0.28
<b>Totals</b>	<b>294</b>				<b>97%</b>	<b>26</b>	<b>0.09</b>

