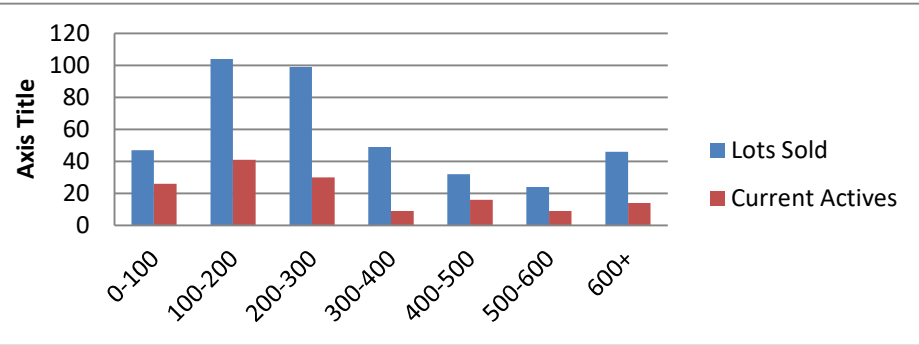


4-1-20--3-31-21 Waterfront Lots on Lake Keowee

	Units Sold	DOM Avg.	Total List Avg	Total Sold Avg	% List/Sale	Current Active	Supply/Yrs
0-100	47	401	\$70,326.00	\$62,702.00	89%	26	0.55
100-200	104	329	\$167,645.00	\$154,810.00	92%	41	0.39
200-300	99	179	\$263,000.00	\$246,673.00	94%	30	0.30
300-400	49	204	\$365,899.00	\$346,788.00	95%	9	0.18
400-500	32	310	\$479,800.00	\$454,641.00	95%	16	0.50
500-600	24	215	\$570,136.00	\$541,557.00	95%	9	0.38
600+	46	166	\$777,460.00	\$746,441.00	96%	14	0.30
Totals	401				94%	145	0.36



4-1-20--3-31-21 Waterfront Houses on Lake Keowee

In 1000's	Units Sold	DOM Avg.	List Avg	Sold Avg	List/Sale	Active	Supply/Yrs
200-400	13	76	\$309,908.00	\$304,631.00	98%	1	0.08
400-500	9	110	\$477,211.00	\$457,389.00	96%	0	0.00
500-600	36	120	\$574,536.00	\$551,147.00	96%	1	0.03
600-700	31	87	\$669,693.00	\$653,931.00	98%	2	0.06
700-800	28	71	\$763,663.00	\$749,454.00	98%	1	0.04
800-1000	71	90	\$921,425.00	\$895,962.00	97%	2	0.03
1000-1500	75	99	\$1,277,472.00	\$1,225,761.00	96%	7	0.09
1500-2000	45	133	\$1,743,370.00	\$1,735,236.00	100%	5	0.11
2000-up	33	106	\$2,590,831.00	\$2,503,352.00	97%	7	0.21
Totals	341				97%	26	0.08

