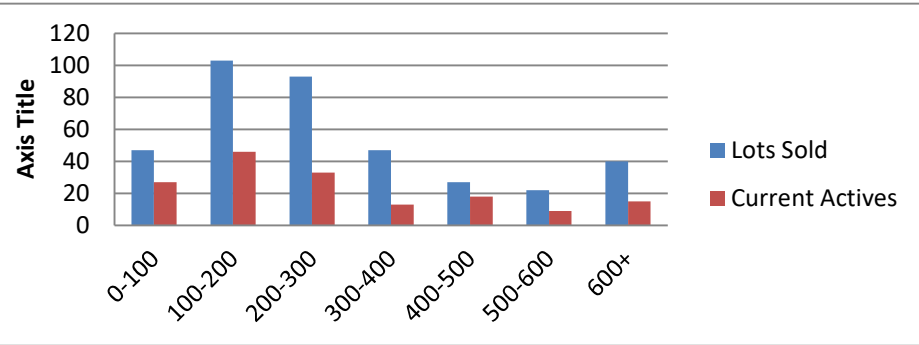


3-1-20--2-28-21 Waterfront Lots on Lake Keowee

	Units Sold	DOM Avg.	Total List Avg	Total Sold Avg	% List/Sale	Current Active	Supply/Yrs
0-100	47	415	\$73,986.00	\$64,513.00	87%	27	0.57
100-200	103	312	\$165,233.00	\$153,122.00	93%	46	0.45
200-300	93	174	\$261,089.00	\$246,695.00	94%	33	0.35
300-400	47	204	\$366,027.00	\$344,313.00	94%	13	0.28
400-500	27	310	\$481,248.00	\$454,204.00	94%	18	0.67
500-600	22	222	\$573,535.00	\$543,067.00	95%	9	0.41
600+	40	168	\$784,804.00	\$753,733.00	96%	15	0.38
Totals	379				93%	161	0.42



3-1-20--2-28-21 Waterfront Houses on Lake Keowee

In 1000's	Units Sold	DOM Avg.	List Avg	Sold Avg	List/Sale	Active	Supply/Yrs
200-400	13	76	\$309,908.00	\$304,631.00	98%	0	0.00
400-500	11	103	\$485,354.00	\$462,864.00	95%	0	0.00
500-600	40	124	\$574,283.00	\$550,583.00	96%	0	0.00
600-700	30	88	\$667,016.00	\$654,062.00	98%	0	0.00
700-800	29	84	\$767,137.00	\$747,886.00	97%	1	0.03
800-1000	71	90	\$921,306.00	\$896,174.00	97%	3	0.04
1000-1500	81	101	\$1,277,030.00	\$1,226,996.00	96%	5	0.06
1500-2000	38	169	\$1,826,801.00	\$1,733,383.00	95%	5	0.13
2000-up	31	113	\$2,644,200.00	\$2,529,579.00	96%	5	0.16
Totals	344				97%	19	0.06

