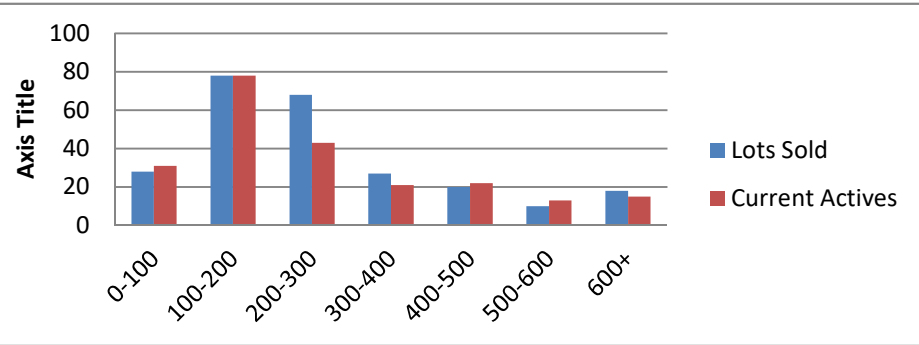


9-1-19--9-30-20 Waterfront Lots on Lake Keowee

	Units Sold	DOM Avg.	Total List Avg	Total Sold Avg	% List/Sale	Current Active	Supply/Yrs
0-100	28	232	\$78,201.00	\$68,918.00	88%	31	1.11
100-200	78	279	\$166,080.00	\$152,786.00	92%	78	1.00
200-300	68	185	\$263,125.00	\$243,348.00	92%	43	0.63
300-400	27	242	\$386,558.00	\$350,981.00	91%	21	0.78
400-500	20	329	\$501,190.00	\$453,600.00	91%	22	1.10
500-600	10	254	\$596,000.00	\$544,750.00	91%	13	1.30
600+	18	191	\$733,076.00	\$698,042.00	95%	15	0.83
Totals	249				92%	223	0.90



9-1-19--9-30-20 Waterfront Houses on Lake Keowee

In 1000's	Units Sold	DOM Avg.	List Avg	Sold Avg	List/Sale	Active	Supply/Yrs
200-400	9	184	\$320,933.00	\$305,889.00	95%	0	0.00
400-500	14	117	\$493,056.00	\$466,464.00	95%	1	0.07
500-600	41	145	\$577,571.00	\$553,300.00	96%	1	0.02
600-700	31	98	\$669,647.00	\$642,924.00	96%	1	0.03
700-800	31	98	\$772,451.00	\$752,821.00	97%	1	0.03
800-1000	59	106	\$920,724.00	\$893,091.00	97%	6	0.10
1000-1500	78	134	\$1,269,471.00	\$1,213,967.00	96%	4	0.05
1500-2000	37	171	\$1,850,822.00	\$1,750,663.00	95%	5	0.14
2000-up	17	150	\$2,689,365.00	\$2,563,981.00	95%	13	0.76
Totals	317				96%	32	0.10

