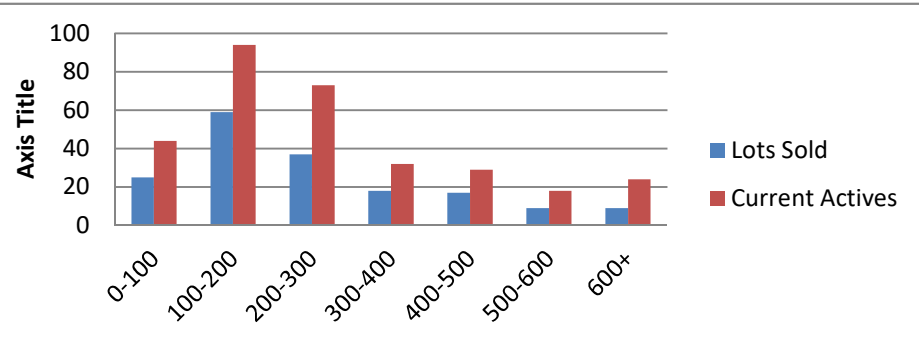


5-1-19--5-31-20 Waterfront Lots on Lake Keowee

	Units Sold	DOM Avg.	Total List Avg	Total Sold Avg	% List/Sale	Current Active	Supply/Yrs
0-100	25	274	\$71,788.00	\$61,946.00	86%	44	1.76
100-200	59	256	\$165,049.00	\$151,666.00	92%	94	1.59
200-300	37	189	\$267,105.00	\$247,676.00	93%	73	1.97
300-400	18	325	\$373,765.00	\$346,139.00	93%	32	1.78
400-500	17	311	\$516,482.00	\$464,794.00	90%	29	1.71
500-600	9	293	\$580,722.00	\$534,167.00	92%	18	2.00
600+	9	262	\$818,878.00	\$764,417.00	93%	24	2.67
Totals	174				91%	314	1.80



5-1-19--5-31-20 Waterfront Houses on Lake Keowee

In 1000's	Units Sold	DOM Avg.	List Avg	Sold Avg	List/Sale	Active	Supply/Yrs
200-400	7	188	\$321,129.00	\$302,071.00	94%	2	0.29
400-500	13	123	\$507,599.00	\$475,115.00	94%	2	0.15
500-600	35	133	\$580,696.00	\$556,314.00	96%	12	0.34
600-700	27	129	\$673,830.00	\$642,509.00	95%	4	0.15
700-800	26	125	\$789,704.00	\$761,106.00	96%	5	0.19
800-1000	49	91	\$908,835.00	\$882,705.00	97%	16	0.33
1000-1500	54	149	\$1,279,662.00	\$1,227,517.00	96%	21	0.39
1500-2000	21	177	\$1,868,026.00	\$1,782,533.00	95%	17	0.81
2000-up	10	205	\$2,977,018.00	\$2,752,500.00	92%	11	1.10
Totals	242				95%	90	0.37

