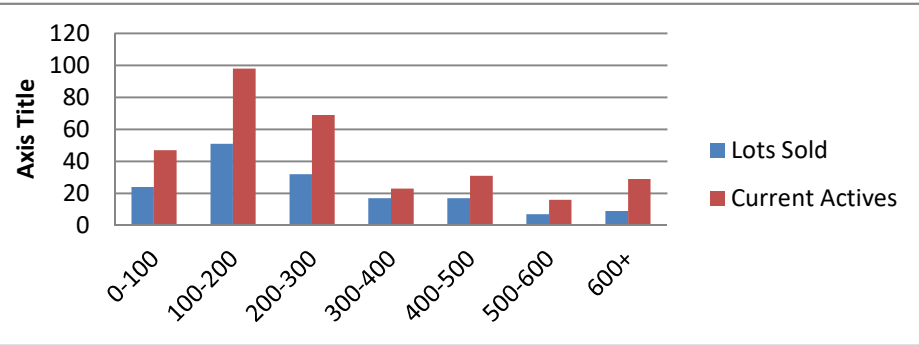


4-1-19--4-31-20 Waterfront Lots on Lake Keowee

	Units Sold	DOM Avg.	Total List Avg	Total Sold Avg	% List/Sale	Current Active	Supply/Yrs
0-100	24	277	\$72,908.00	\$62,819.00	86%	47	1.96
100-200	51	250	\$165,982.00	\$152,939.00	92%	98	1.92
200-300	32	186	\$267,628.00	\$248,031.00	93%	69	2.16
300-400	17	336	\$373,992.00	\$345,912.00	92%	23	1.35
400-500	17	311	\$516,482.00	\$464,794.00	90%	31	1.82
500-600	7	316	\$586,786.00	\$534,643.00	91%	16	2.29
600+	9	262	\$818,878.00	\$764,417.00	93%	29	3.22
<b>Totals</b>	<b>157</b>				<b>91%</b>	<b>313</b>	<b>1.99</b>



4-1-19--4-31-20 Waterfront Houses on Lake Keowee

In 1000's	Units Sold	DOM Avg.	List Avg	Sold Avg	List/Sale	Active	Supply/Yrs
200-400	7	188	\$321,129.00	\$302,071.00	94%	3	0.43
400-500	13	123	\$507,599.00	\$475,115.00	94%	2	0.15
500-600	31	139	\$579,043.00	\$555,839.00	96%	10	0.32
600-700	25	128	\$675,376.00	\$643,990.00	95%	6	0.24
700-800	25	129	\$791,292.00	\$762,550.00	96%	5	0.20
800-1000	46	95	\$905,607.00	\$881,469.00	97%	16	0.35
1000-1500	51	152	\$1,290,390.00	\$1,233,733.00	96%	28	0.55
1500-2000	19	171	\$1,872,082.00	\$1,782,063.00	95%	17	0.89
2000-up	9	225	\$2,974,464.00	\$2,741,667.00	92%	9	1.00
<b>Totals</b>	<b>226</b>				<b>95%</b>	<b>96</b>	<b>0.42</b>

