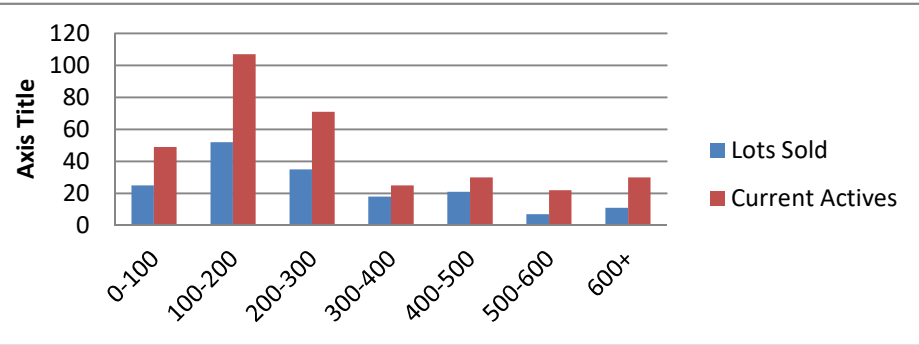


3-1-19--3-31-20 Waterfront Lots on Lake Keowee

	Units Sold	DOM Avg.	Total List Avg	Total Sold Avg	% List/Sale	Current Active	Supply/Yrs
0-100	25	222	\$71,696.00	\$61,036.00	85%	49	1.96
100-200	52	246	\$163,504.00	\$150,325.00	92%	107	2.06
200-300	35	189	\$266,209.00	\$245,279.00	92%	71	2.03
300-400	18	322	\$379,048.00	\$350,111.00	92%	25	1.39
400-500	21	352	\$509,200.00	\$458,952.00	90%	30	1.43
500-600	7	316	\$586,786.00	\$534,643.00	91%	22	3.14
600+	11	276	\$815,445.00	\$760,886.00	93%	30	2.73
Totals	169				91%	334	1.98



3-1-19--3-31-20 Waterfront Houses on Lake Keowee

In 1000's	Units Sold	DOM Avg.	List Avg	Sold Avg	List/Sale	Active	Supply/Yrs
200-400	9	172	\$336,533.00	\$318,556.00	95%	2	0.22
400-500	13	128	\$500,830.00	\$469,346.00	94%	1	0.08
500-600	31	126	\$579,850.00	\$556,194.00	96%	12	0.39
600-700	29	135	\$687,490.00	\$649,424.00	94%	12	0.41
700-800	25	111	\$788,092.00	\$758,350.00	96%	4	0.16
800-1000	39	95	\$903,292.00	\$878,487.00	97%	15	0.38
1000-1500	53	159	\$1,292,178.00	\$1,226,220.00	95%	23	0.43
1500-2000	19	180	\$1,871,837.00	\$1,782,503.00	95%	17	0.89
2000-up	6	242	\$2,967,458.00	\$2,687,500.00	91%	14	2.33
Totals	224				95%	100	0.45

