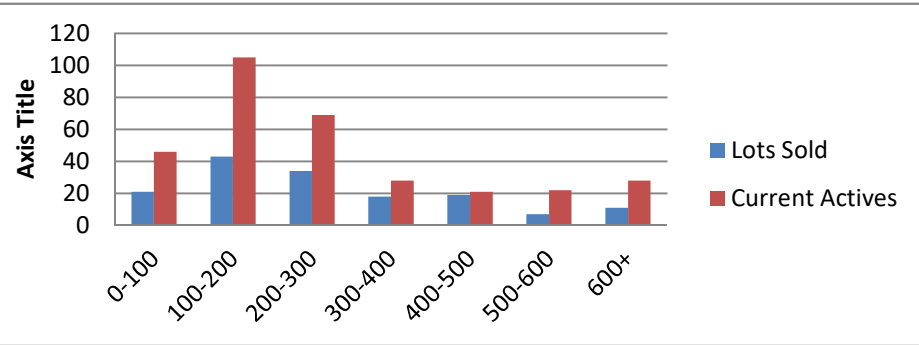


2-1-19--1-31-20 Waterfront Lots on Lake Keowee

	Units Sold	DOM Avg.	Total List Avg	Total Sold Avg	% List/Sale	Current Active	Supply/Yrs
0-100	21	210	\$64,737.00	\$55,948.00	86%	46	2.19
100-200	43	226	\$166,153.00	\$153,235.00	92%	105	2.44
200-300	34	185	\$264,565.00	\$243,919.00	92%	69	2.03
300-400	18	322	\$379,048.00	\$350,111.00	92%	28	1.56
400-500	19	382	\$513,063.00	\$459,105.00	89%	21	1.11
500-600	7	316	\$586,786.00	\$534,643.00	91%	22	3.14
600+	11	276	\$815,445.00	\$760,886.00	93%	28	2.55
Totals	153				91%	319	2.08



2-1-19--1-31-20 Waterfront Houses on Lake Keowee

In 1000's	Units Sold	DOM Avg.	List Avg	Sold Avg	List/Sale	Active	Supply/Yrs
200-400	7	137	\$325,700.00	\$307,357.00	94%	2	0.29
400-500	11	110	\$496,981.00	\$469,455.00	94%	2	0.18
500-600	32	122	\$577,511.00	\$555,578.00	96%	12	0.38
600-700	30	130	\$687,540.00	\$651,243.00	95%	10	0.33
700-800	22	107	\$790,177.00	\$760,898.00	96%	3	0.14
800-1000	37	111	\$904,027.00	\$877,730.00	97%	12	0.32
1000-1500	46	154	\$1,293,551.00	\$1,227,783.00	95%	22	0.48
1500-2000	16	184	\$1,837,859.00	\$1,751,615.00	95%	16	1.00
2000-up	6	190	\$3,185,125.00	\$2,972,500.00	93%	16	2.67
Totals	207				95%	95	0.46

