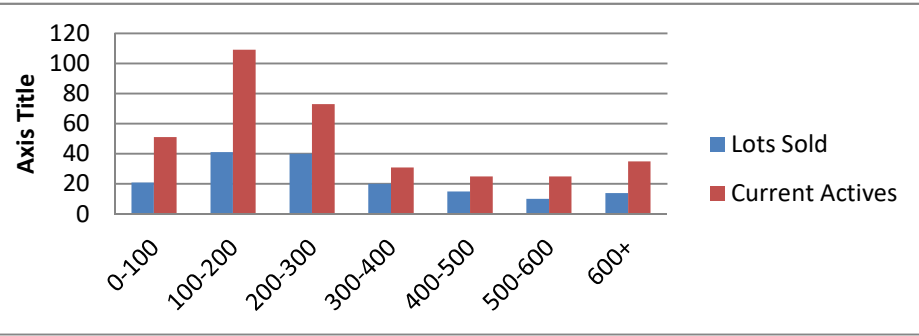


12-1-18--12-1-19 Waterfront Lots on Lake Keowee

	Units Sold	DOM Avg.	Total List Avg	Total Sold Avg	% List/Sale	Current Active	Supply/Yrs
0-100	21	217	\$62,551.00	\$52,471.00	84%	51	2.43
100-200	41	227	\$166,724.00	\$152,932.00	92%	109	2.66
200-300	40	191	\$268,748.00	\$248,181.00	92%	73	1.83
300-400	20	320	\$368,157.00	\$347,260.00	94%	31	1.55
400-500	15	454	\$491,547.00	\$455,867.00	93%	25	1.67
500-600	10	335	\$592,340.00	\$547,820.00	92%	25	2.50
600+	14	388	\$821,343.00	\$758,196.00	92%	35	2.50
Totals	161				91%	349	2.17



12-1-18--12-1-19 Waterfront Houses on Lake Keowee

In 1000's	Units Sold	DOM Avg.	List Avg	Sold Avg	List/Sale	Active	Supply/Yrs
200-400	7	108	\$328,986.00	\$312,786.00	95%	5	0.71
400-500	11	117	\$500,982.00	\$468,136.00	93%	5	0.45
500-600	33	126	\$582,252.00	\$560,258.00	96%	6	0.18
600-700	27	147	\$682,174.00	\$651,714.00	96%	11	0.41
700-800	19	100	\$792,526.00	\$757,053.00	96%	3	0.16
800-1000	38	114	\$897,787.00	\$868,976.00	97%	14	0.37
1000-1500	41	148	\$1,278,931.00	\$1,220,427.00	95%	27	0.66
1500-2000	15	176	\$1,836,783.00	\$1,759,723.00	96%	21	1.40
2000-up	8	174	\$3,110,093.00	\$2,901,250.00	93%	20	2.50
Totals	199				95%	112	0.56

