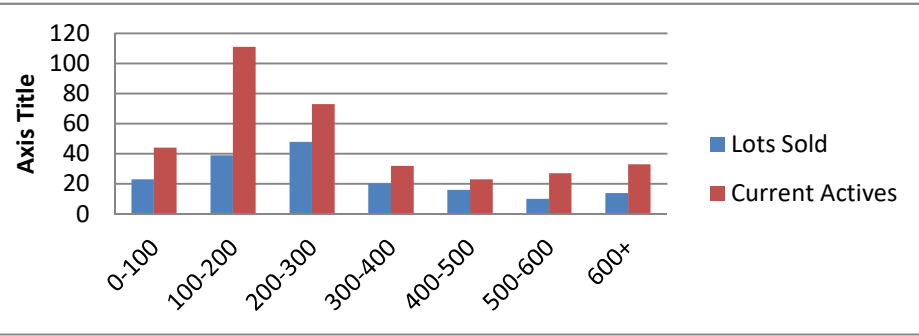


11-1-18--11-1-19 Waterfront Lots on Lake Keowee

	Units Sold	DOM Avg.	Total List Avg	Total Sold Avg	% List/Sale	Current Active	Supply/Yrs
0-100	23	223	\$67,412.00	\$57,474.00	85%	44	1.91
100-200	39	243	\$168,272.00	\$154,153.00	92%	111	2.85
200-300	48	193	\$272,256.00	\$250,243.00	92%	73	1.52
300-400	20	320	\$368,157.00	\$347,260.00	94%	32	1.60
400-500	16	450	\$488,319.00	\$452,375.00	93%	23	1.44
500-600	10	335	\$592,340.00	\$547,820.00	92%	27	2.70
600+	14	364	\$819,914.00	\$762,429.00	93%	33	2.36
Totals	170				92%	343	2.02



11-1-18--11-1-19 Waterfront Houses on Lake Keowee

In 1000's	Units Sold	DOM Avg.	List Avg	Sold Avg	List/Sale	Active	Supply/Yrs
200-400	8	128	\$330,238.00	\$311,813.00	94%	6	0.75
400-500	12	113	\$500,817.00	\$467,458.00	93%	7	0.58
500-600	34	126	\$582,738.00	\$561,940.00	96%	11	0.32
600-700	25	143	\$683,348.00	\$653,051.00	96%	11	0.44
700-800	19	99	\$789,895.00	\$753,877.00	95%	10	0.53
800-1000	35	121	\$894,597.00	\$865,131.00	97%	17	0.49
1000-1500	42	161	\$1,270,956.00	\$1,213,512.00	95%	32	0.76
1500-2000	11	165	\$1,881,704.00	\$1,789,622.00	95%	22	2.00
2000-up	9	160	\$3,019,527.00	\$2,801,111.00	93%	20	2.22
Totals	195				95%	136	0.70

