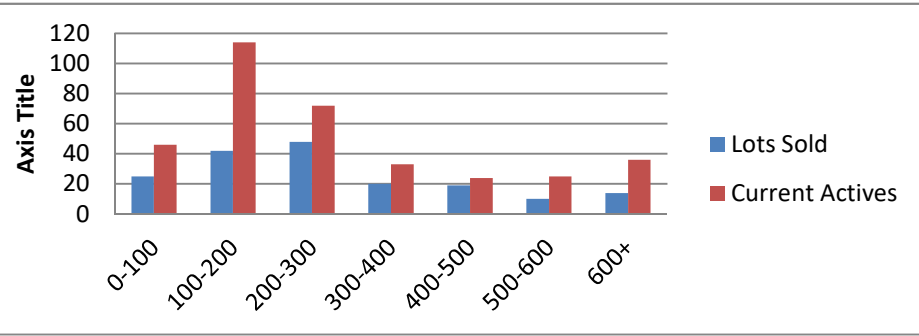


10-1-18--10-1-19 Waterfront Lots on Lake Keowee

	Units Sold	DOM Avg.	Total List Avg	Total Sold Avg	% List/Sale	Current Active	Supply/Yrs
0-100	25	226	\$66,399.00	\$56,976.00	86%	46	1.84
100-200	42	229	\$171,252.00	\$156,382.00	91%	114	2.71
200-300	48	193	\$272,256.00	\$250,243.00	92%	72	1.50
300-400	20	301	\$358,487.00	\$339,905.00	95%	33	1.65
400-500	19	404	\$488,742.00	\$452,889.00	93%	24	1.26
500-600	10	335	\$592,340.00	\$547,820.00	92%	25	2.50
600+	14	351	\$823,493.00	\$767,786.00	93%	36	2.57
<b>Totals</b>	<b>178</b>				<b>92%</b>	<b>350</b>	<b>1.97</b>



10-1-18--10-1-19 Waterfront Houses on Lake Keowee

In 1000's	Units Sold	DOM Avg.	List Avg	Sold Avg	List/Sale	Active	Supply/Yrs
200-400	7	119	\$343,843.00	\$325,929.00	95%	5	0.71
400-500	11	123	\$492,718.00	\$461,864.00	94%	3	0.27
500-600	32	131	\$577,101.00	\$555,391.00	96%	12	0.38
600-700	23	162	\$683,291.00	\$652,795.00	96%	11	0.48
700-800	17	103	\$777,588.00	\$747,215.00	96%	10	0.59
800-1000	31	120	\$905,532.00	\$874,713.00	97%	19	0.61
1000-1500	39	168	\$1,282,312.00	\$1,219,628.00	95%	36	0.92
1500-2000	12	169	\$1,862,061.00	\$1,765,403.00	95%	23	1.92
2000-up	11	131	\$2,829,068.00	\$2,659,000.00	94%	18	1.64
<b>Totals</b>	<b>183</b>				<b>95%</b>	<b>137</b>	<b>0.75</b>

