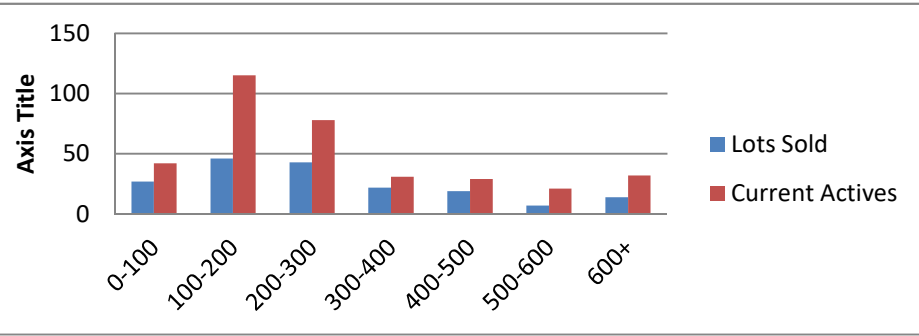


8-1-18--8-1-19 Waterfront Lots on Lake Keowee

	Units Sold	DOM Avg.	Total List Avg	Total Sold Avg	% List/Sale	Current Active	Supply/Yrs
0-100	27	247	\$66,481.00	\$55,793.00	84%	42	1.56
100-200	46	233	\$172,202.00	\$157,535.00	91%	115	2.50
200-300	43	207	\$273,300.00	\$250,317.00	92%	78	1.81
300-400	22	290	\$356,907.00	\$342,500.00	96%	31	1.41
400-500	19	341	\$477,268.00	\$445,579.00	93%	29	1.53
500-600	7	285	\$593,486.00	\$562,029.00	95%	21	3.00
600+	14	351	\$823,493.00	\$767,786.00	93%	32	2.29
<b>Totals</b>	<b>178</b>				<b>92%</b>	<b>348</b>	<b>1.96</b>



8-1-18--8-1-19 Waterfront Houses on Lake Keowee

In 1000's	Units Sold	DOM Avg.	List Avg	Sold Avg	List/Sale	Active	Supply/Yrs
200-400	9	171	\$350,202.00	\$334,947.00	96%	7	0.78
400-500	16	120	\$496,994.00	\$462,406.00	93%	5	0.31
500-600	35	113	\$577,038.00	\$554,929.00	96%	11	0.31
600-700	21	148	\$690,229.00	\$654,002.00	95%	9	0.43
700-800	16	75	\$783,863.00	\$750,910.00	96%	7	0.44
800-1000	29	135	\$907,221.00	\$874,941.00	96%	19	0.66
1000-1500	37	176	\$1,275,267.00	\$1,205,541.00	95%	32	0.86
1500-2000	17	195	\$1,859,624.00	\$1,752,449.00	94%	28	1.65
2000-up	11	131	\$2,829,068.00	\$2,659,000.00	94%	22	2.00
<b>Totals</b>	<b>191</b>				<b>95%</b>	<b>140</b>	<b>0.73</b>

