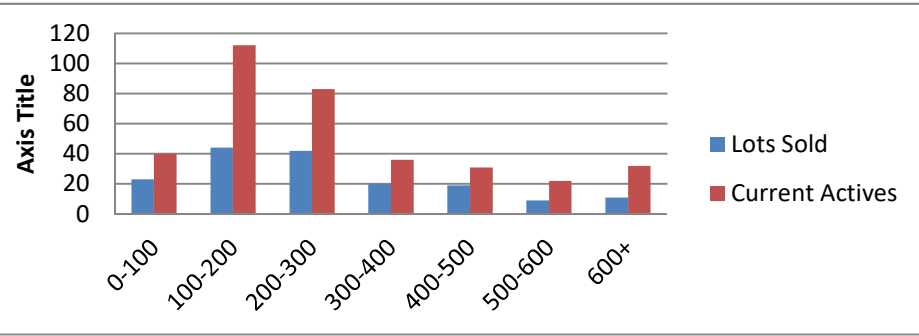


7-1-18--7-1-19 Waterfront Lots on Lake Keowee

	Units Sold	DOM Avg.	Total List Avg	Total Sold Avg	% List/Sale	Current Active	Supply/Yrs
0-100	23	214	\$67,912.00	\$56,517.00	83%	40	1.74
100-200	44	232	\$176,143.00	\$161,173.00	92%	112	2.55
200-300	42	218	\$272,355.00	\$249,039.00	91%	83	1.98
300-400	20	265	\$354,989.00	\$344,780.00	97%	36	1.80
400-500	19	352	\$475,689.00	\$442,868.00	93%	31	1.63
500-600	9	289	\$585,922.00	\$553,244.00	94%	22	2.44
600+	11	397	\$798,718.00	\$743,091.00	93%	32	2.91
<b>Totals</b>	<b>168</b>				<b>92%</b>	<b>356</b>	<b>2.12</b>



7-1-18--7-1-19 Waterfront Houses on Lake Keowee

In 1000's	Units Sold	DOM Avg.	List Avg	Sold Avg	List/Sale	Active	Supply/Yrs
200-400	10	158	\$350,082.00	\$334,452.00	96%	7	0.70
400-500	16	126	\$495,119.00	\$459,656.00	93%	6	0.38
500-600	31	106	\$577,095.00	\$554,558.00	96%	10	0.32
600-700	22	127	\$692,355.00	\$654,377.00	95%	15	0.68
700-800	16	78	\$789,488.00	\$753,378.00	95%	10	0.63
800-1000	30	148	\$913,697.00	\$876,940.00	96%	18	0.60
1000-1500	36	172	\$1,288,616.00	\$1,214,444.00	94%	38	1.06
1500-2000	16	162	\$1,857,119.00	\$1,746,809.00	94%	27	1.69
2000-up	10	137	\$2,771,975.00	\$2,647,400.00	96%	19	1.90
<b>Totals</b>	<b>187</b>				<b>95%</b>	<b>150</b>	<b>0.80</b>

