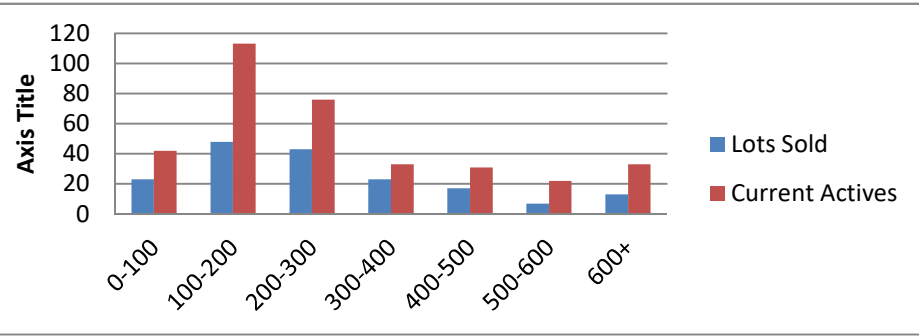


6-1-18--6-1-19 Waterfront Lots on Lake Keowee

	Units Sold	DOM Avg.	Total List Avg	Total Sold Avg	% List/Sale	Current Active	Supply/Yrs
0-100	23	219	\$71,173.00	\$60,104.00	84%	42	1.83
100-200	48	278	\$182,488.00	\$164,494.00	90%	113	2.35
200-300	43	226	\$269,484.00	\$246,573.00	91%	76	1.77
300-400	23	278	\$355,164.00	\$343,330.00	97%	33	1.43
400-500	17	282	\$474,594.00	\$441,235.00	93%	31	1.82
500-600	7	296	\$590,257.00	\$558,814.00	95%	22	3.14
600+	13	357	\$797,754.00	\$747,223.00	94%	33	2.54
Totals	174				92%	350	2.01



6-1-18--6-1-19 Waterfront Houses on Lake Keowee

In 1000's	Units Sold	DOM Avg.	List Avg	Sold Avg	List/Sale	Active	Supply/Yrs
200-400	10	163	\$355,582.00	\$338,452.00	95%	8	0.80
400-500	16	142	\$498,300.00	\$459,531.00	92%	6	0.38
500-600	33	111	\$571,323.00	\$550,348.00	96%	10	0.30
600-700	25	142	\$690,248.00	\$652,831.00	95%	15	0.60
700-800	14	82	\$792,414.00	\$757,790.00	96%	11	0.79
800-1000	31	161	\$927,577.00	\$883,565.00	95%	19	0.61
1000-1500	38	193	\$1,274,294.00	\$1,196,053.00	94%	42	1.11
1500-2000	14	153	\$1,852,786.00	\$1,733,782.00	94%	22	1.57
2000-up	8	146	\$2,682,667.00	\$2,558,222.00	95%	22	2.75
Totals	189				95%	155	0.82

