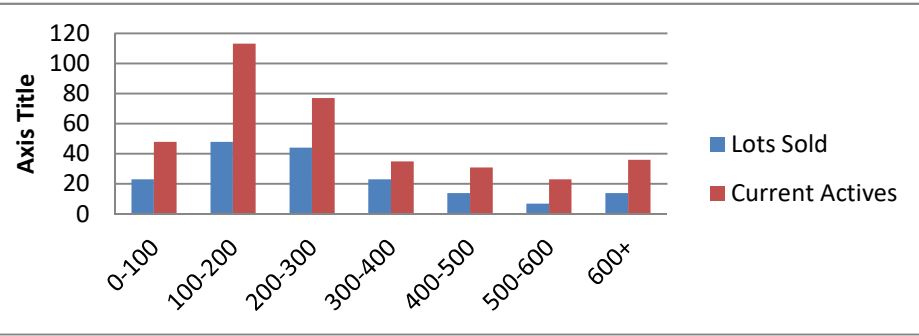


5-1-18--5-1-19 Waterfront Lots on Lake Keowee

	Units Sold	DOM Avg.	Total List Avg	Total Sold Avg	% List/Sale	Current Active	Supply/Yrs
0-100	23	225	\$71,700.00	\$60,767.00	85%	48	2.09
100-200	48	223	\$172,402.00	\$155,915.00	90%	113	2.35
200-300	44	240	\$270,359.00	\$246,140.00	91%	77	1.75
300-400	23	237	\$355,864.00	\$340,178.00	96%	35	1.52
400-500	14	310	\$471,064.00	\$434,250.00	92%	31	2.21
500-600	7	296	\$590,257.00	\$558,814.00	95%	23	3.29
600+	14	308	\$806,914.00	\$764,921.00	95%	36	2.57
Totals	173				92%	363	2.10



5-1-18--5-1-19 Waterfront Houses on Lake Keowee

In 1000's	Units Sold	DOM Avg.	List Avg	Sold Avg	List/Sale	Active	Supply/Yrs
200-400	22	152	\$318,119.00	\$302,103.00	95%	8	0.36
400-500	20	135	\$489,380.00	\$459,325.00	94%	6	0.30
500-600	34	112	\$570,232.00	\$547,844.00	96%	14	0.41
600-700	28	142	\$688,721.00	\$652,885.00	95%	15	0.54
700-800	13	86	\$795,677.00	\$757,620.00	95%	7	0.54
800-1000	31	161	\$924,538.00	\$881,387.00	95%	18	0.58
1000-1500	38	210	\$1,279,294.00	\$1,199,974.00	94%	41	1.08
1500-2000	14	163	\$1,880,778.00	\$1,728,496.00	92%	23	1.64
2000-up	8	125	\$2,611,750.00	\$2,528,000.00	97%	18	2.25
Totals	208				95%	150	0.72

