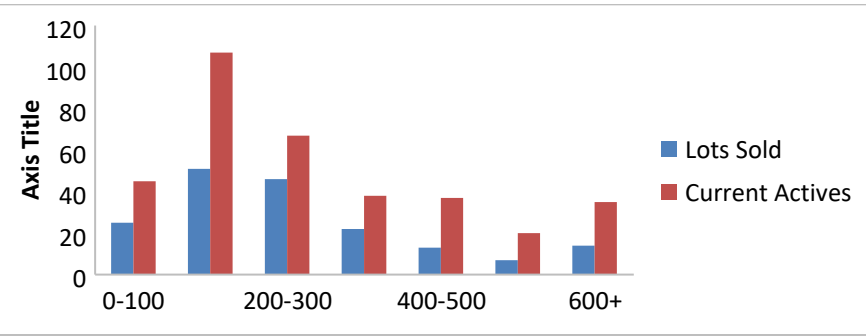


4-1-18--4-1-19 Waterfront Lots on Lake Keowee

	Units Sold	DOM	Avg. List Avg	Total Sold Avg	% List/Sale	Current Active	Supply/Yrs
0-100	25	210	\$73,700.00	\$57,406.00	78%	45	1.80
100-200	51	251	\$172,729.00	\$156,743.00	91%	107	2.10
200-300	46	234	\$267,865.00	\$245,547.00	92%	67	1.46
300-400	22	244	\$353,903.00	\$338,936.00	96%	38	1.73
400-500	13	269	\$469,685.00	\$434,885.00	93%	37	2.85
500-600	7	296	\$590,257.00	\$558,814.00	95%	20	2.86
600+	14	369	\$812,271.00	\$778,493.00	96%	35	2.50
Totals	178				91%	349	1.96



4-1-18--4-1-19 Waterfront Houses on Lake Keowee

In 1000's	Units Sold	DOM	Avg. List Avg	Sold Avg	List/Sale	Active	Supply/Yrs
200-400	12	144	\$328,060.00	\$312,452.00	95%	4	0.33
400-500	15	141	\$495,780.00	\$460,000.00	93%	5	0.33
500-600	45	111	\$570,232.00	\$548,597.00	96%	11	0.24
600-700	23	134	\$680,322.00	\$649,663.00	95%	13	0.57
700-800	13	91	\$801,831.00	\$758,081.00	95%	7	0.54
800-1000	34	175	\$928,932.00	\$886,559.00	95%	17	0.50
1000-1500	33	214	\$1,273,439.00	\$1,197,333.00	94%	34	1.03
1500-2000	14	155	\$1,909,421.00	\$1,734,782.00	91%	26	1.86
2000-up	9	213	\$2,749,333.00	\$2,613,778.00	95%	16	1.78
Totals	198				94%	133	0.67

