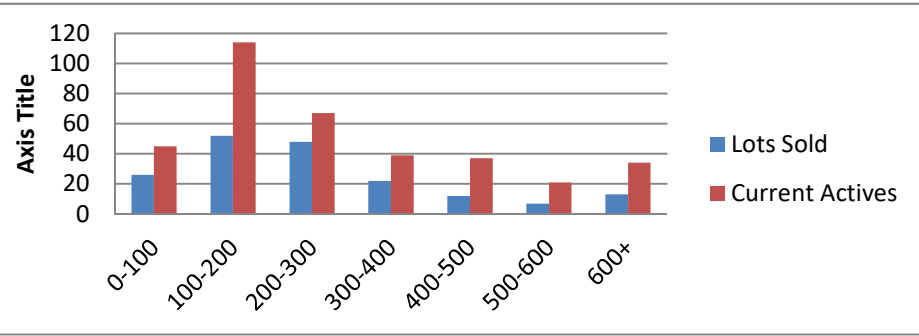


3-1-18--3-1-19 Waterfront Lots on Lake Keowee

	Units Sold	DOM Avg.	Total List Avg	Total Sold Avg	% List/Sale	Current Active	Supply/Yrs
0-100	26	196	\$78,262.00	\$58,621.00	75%	45	1.73
100-200	52	275	\$172,858.00	\$156,977.00	91%	114	2.19
200-300	48	229	\$270,913.00	\$248,269.00	92%	67	1.40
300-400	22	245	\$351,853.00	\$337,118.00	96%	39	1.77
400-500	12	271	\$474,992.00	\$436,083.00	92%	37	3.08
500-600	7	296	\$590,257.00	\$558,814.00	95%	21	3.00
600+	13	342	\$813,292.00	\$778,454.00	96%	34	2.62
Totals	180				91%	357	1.98



3-1-18--3-1-19 Waterfront Houses on Lake Keowee

In 1000's	Units Sold	DOM Avg.	List Avg	Sold Avg	List/Sale	Active	Supply/Yrs
200-400	11	155	\$324,257.00	\$308,811.00	95%	4	0.36
400-500	17	129	\$488,329.00	\$455,735.00	93%	5	0.29
500-600	32	111	\$569,216.00	\$548,709.00	96%	16	0.50
600-700	22	134	\$679,427.00	\$647,102.00	95%	14	0.64
700-800	13	119	\$803,754.00	\$761,927.00	95%	7	0.54
800-1000	36	178	\$935,297.00	\$891,472.00	95%	15	0.42
1000-1500	33	217	\$1,268,258.00	\$1,191,273.00	94%	25	0.76
1500-2000	17	191	\$1,881,876.00	\$1,719,830.00	91%	23	1.35
2000-up	8	223	\$2,693,000.00	\$2,565,500.00	95%	15	1.88
Totals	189				95%	124	0.66

