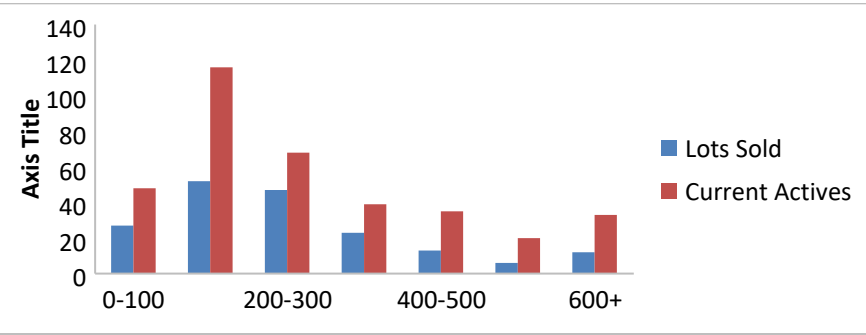


2-1-18--2-1-19 Waterfront Lots on Lake Keowee

	Units Sold	DOM	Avg. List Avg	Total Sold Avg	% List/Sale	Current Active	Supply/Yrs
0-100	27	196	\$78,322.00	\$59,539.00	76%	48	1.78
100-200	52	274	\$172,858.00	\$156,804.00	91%	116	2.23
200-300	47	236	\$271,804.00	\$249,381.00	92%	68	1.45
300-400	23	239	\$350,381.00	\$336,287.00	96%	39	1.70
400-500	13	250	\$474,992.00	\$439,077.00	92%	35	2.69
500-600	6	197	\$584,317.00	\$553,633.00	95%	20	3.33
600+	12	292	\$814,408.00	\$780,825.00	96%	33	2.75
<b>Totals</b>	<b>180</b>				<b>91%</b>	<b>359</b>	<b>1.99</b>



2-1-18--2-1-19 Waterfront Houses on Lake Keowee

In 1000's	Units Sold	DOM	Avg. List Avg	Sold Avg	List/Sale	Active	Supply/Yrs
200-400	12	142	\$328,477.00	\$312,244.00	95%	3	0.25
400-500	18	122	\$484,850.00	\$454,028.00	94%	5	0.28
500-600	33	123	\$575,876.00	\$554,733.00	96%	12	0.36
600-700	21	144	\$684,210.00	\$648,012.00	95%	10	0.48
700-800	14	118	\$809,129.00	\$760,718.00	94%	7	0.50
800-1000	36	158	\$935,699.00	\$891,681.00	95%	14	0.39
1000-1500	36	206	\$1,276,042.00	\$1,195,236.00	94%	18	0.50
1500-2000	18	221	\$1,868,994.00	\$1,709,006.00	91%	16	0.89
2000-up	11	197	\$2,667,182.00	\$2,472,636.00	93%	15	1.36
<b>Totals</b>	<b>199</b>				<b>94%</b>	<b>100</b>	<b>0.50</b>

