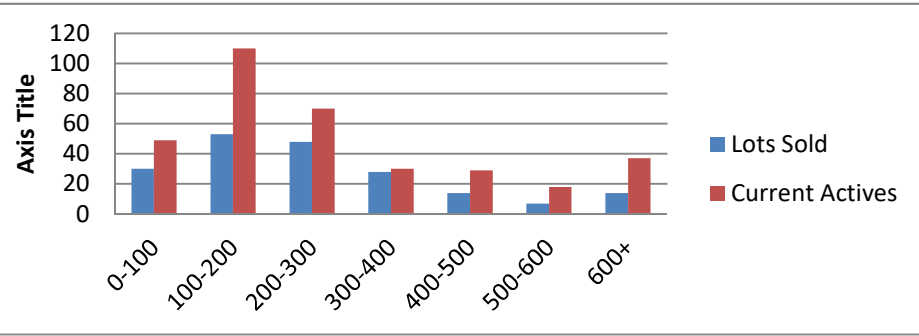


1-1-18--12-31-18 Waterfront Lots on Lake Keowee

	Units Sold	DOM Avg.	Total List Avg	Total Sold Avg	% List/Sale	Current Active	Supply/Yrs
0-100	30	197	\$77,320.00	\$60,252.00	78%	49	1.63
100-200	53	272	\$172,068.00	\$155,770.00	91%	110	2.08
200-300	48	222	\$273,060.00	\$250,435.00	92%	70	1.46
300-400	28	213	\$362,706.00	\$343,200.00	95%	30	1.07
400-500	14	245	\$472,850.00	\$438,429.00	93%	29	2.07
500-600	7	198	\$583,557.00	\$559,543.00	96%	18	2.57
600+	14	251	\$806,993.00	\$766,850.00	95%	37	2.64
Totals	194				91%	343	1.77



1-1-18--12-31-18 Waterfront Houses on Lake Keowee

In 1000's	Units Sold	DOM Avg.	List Avg	Sold Avg	List/Sale	Active	Supply/Yrs
200-400	11	149	\$324,793.00	\$308,084.00	95%	3	0.27
400-500	16	121	\$483,331.00	\$452,656.00	94%	5	0.31
500-600	30	119	\$572,830.00	\$552,040.00	96%	12	0.40
600-700	24	134	\$680,933.00	\$647,635.00	95%	10	0.42
700-800	12	107	\$805,650.00	\$764,171.00	95%	7	0.58
800-1000	36	158	\$939,035.00	\$894,278.00	95%	14	0.39
1000-1500	37	212	\$1,302,486.00	\$1,217,946.00	94%	18	0.49
1500-2000	21	217	\$1,882,424.00	\$1,706,529.00	91%	16	0.76
2000-up	12	189	\$2,669,500.00	\$2,443,667.00	92%	15	1.25
Totals	199				94%	100	0.50

