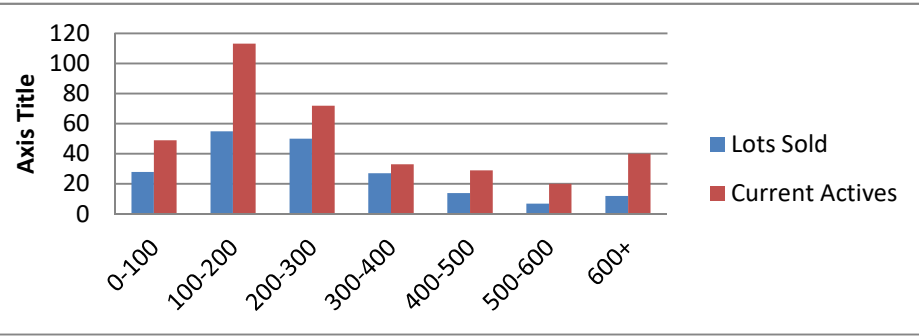


12-1-17--11-30-18 Waterfront Lots on Lake Keowee

	Units Sold	DOM Avg.	Total List Avg	Total Sold Avg	% List/Sale	Current Active	Supply/Yrs
0-100	28	207	\$79,807.00	\$62,377.00	78%	49	1.75
100-200	55	259	\$174,445.00	\$157,467.00	90%	113	2.05
200-300	50	219	\$272,468.00	\$246,798.00	91%	72	1.44
300-400	27	196	\$369,278.00	\$347,789.00	94%	33	1.22
400-500	14	245	\$472,850.00	\$438,429.00	93%	29	2.07
500-600	7	313	\$574,843.00	\$545,857.00	95%	20	2.86
600+	12	206	\$806,658.00	\$772,158.00	96%	40	3.33
Totals	193				91%	356	1.84



11-1-17--11-30-18 Waterfront Houses on Lake Keowee

In 1000's	Units Sold	DOM Avg.	List Avg	Sold Avg	List/Sale	Active	Supply/Yrs
200-400	12	147	\$332,475.00	\$315,742.00	95%	5	0.42
400-500	18	113	\$481,794.00	\$451,906.00	94%	5	0.28
500-600	32	123	\$575,278.00	\$553,913.00	96%	14	0.44
600-700	28	131	\$680,582.00	\$647,759.00	95%	10	0.36
700-800	12	107	\$805,650.00	\$764,171.00	95%	8	0.67
800-1000	32	167	\$946,256.00	\$899,469.00	95%	17	0.53
1000-1500	37	212	\$1,300,568.00	\$1,215,919.00	93%	23	0.62
1500-2000	21	223	\$1,887,376.00	\$1,712,005.00	91%	17	0.81
2000-up	10	210	\$2,615,900.00	\$2,367,400.00	91%	17	1.70
Totals	202				94%	116	0.57

