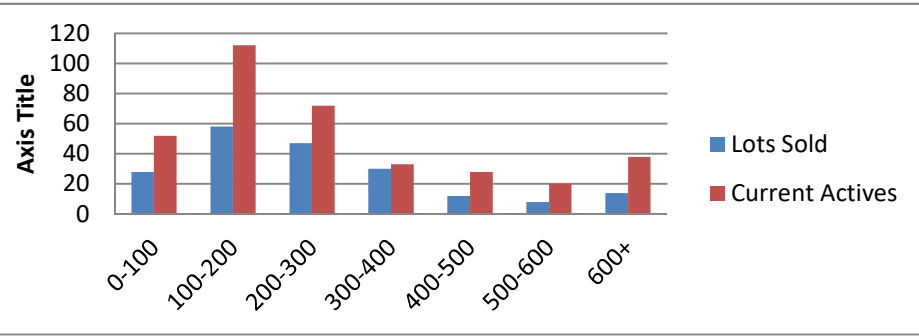


11-1-17--10-31-18 Waterfront Lots on Lake Keowee

	Units Sold	DOM Avg.	Total List Avg	Total Sold Avg	% List/Sale	Current Active	Supply/Yrs
0-100	28	225	\$82,146.00	\$61,841.00	75%	52	1.86
100-200	58	274	\$173,683.00	\$156,835.00	90%	112	1.93
200-300	47	239	\$274,683.00	\$248,551.00	90%	72	1.53
300-400	30	169	\$363,380.00	\$347,180.00	96%	33	1.10
400-500	12	248	\$472,500.00	\$438,167.00	93%	28	2.33
500-600	8	310	\$581,738.00	\$548,875.00	94%	20	2.50
600+	14	213	\$913,129.00	\$869,707.00	95%	38	2.71
Totals	197				91%	355	1.80



11-1-17--10-31-18 Waterfront Houses on Lake Keowee

In 1000's	Units Sold	DOM Avg.	List Avg	Sold Avg	List/Sale	Active	Supply/Yrs
200-400	13	147	\$325,323.00	\$308,608.00	95%	4	0.31
400-500	20	107	\$482,765.00	\$454,515.00	94%	6	0.30
500-600	34	113	\$573,909.00	\$552,065.00	96%	16	0.47
600-700	31	145	\$677,429.00	\$645,234.00	95%	12	0.39
700-800	12	124	\$809,892.00	\$765,867.00	95%	8	0.67
800-1000	32	165	\$949,381.00	\$901,039.00	95%	17	0.53
1000-1500	35	200	\$1,313,629.00	\$1,226,114.00	93%	26	0.74
1500-2000	19	230	\$1,865,734.00	\$1,693,532.00	91%	21	1.11
2000-up	11	237	\$2,573,545.00	\$2,361,273.00	92%	16	1.45
Totals	207				94%	126	0.61

