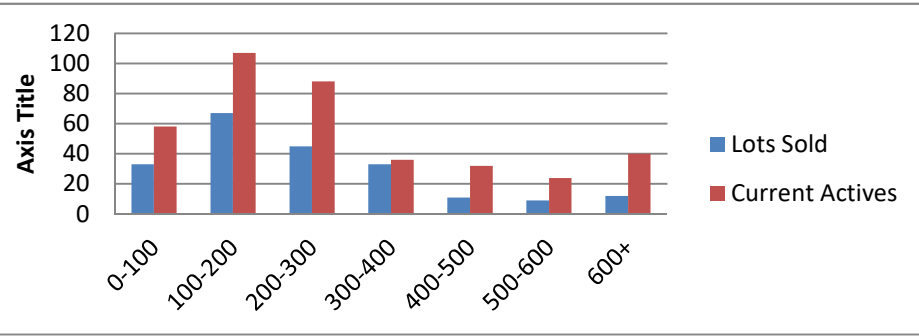


9-1-17--9-1-18 Waterfront Lots on Lake Keowee

	Units Sold	DOM Avg.	Total List Avg	Total Sold Avg	% List/Sale	Current Active	Supply/Yrs
0-100	33	202	\$82,633.00	\$63,550.00	77%	58	1.76
100-200	67	298	\$174,019.00	\$155,828.00	90%	107	1.60
200-300	45	242	\$272,278.00	\$248,607.00	91%	88	1.96
300-400	33	190	\$370,764.00	\$349,255.00	94%	36	1.09
400-500	11	260	\$471,909.00	\$440,273.00	93%	32	2.91
500-600	9	278	\$582,089.00	\$546,667.00	94%	24	2.67
600+	12	247	\$815,242.00	\$775,075.00	95%	40	3.33
Totals	210				91%	385	1.83



9-1-17--9-1-18 Waterfront Houses on Lake Keowee

In 1000's	Units Sold	DOM Avg.	List Avg	Sold Avg	List/Sale	Active	Supply/Yrs
200-400	13	145	\$324,554.00	\$310,531.00	96%	2	0.15
400-500	20	94	\$481,767.00	\$457,340.00	95%	6	0.30
500-600	28	120	\$577,603.00	\$554,971.00	96%	16	0.57
600-700	31	148	\$677,364.00	\$645,863.00	95%	13	0.42
700-800	17	126	\$807,453.00	\$763,988.00	95%	4	0.24
800-1000	32	145	\$944,316.00	\$893,211.00	95%	14	0.44
1000-1500	33	203	\$1,311,576.00	\$1,238,303.00	94%	29	0.88
1500-2000	19	218	\$1,828,100.00	\$1,677,274.00	92%	21	1.11
2000-up	8	264	\$2,671,875.00	\$2,396,875.00	90%	15	1.88
Totals	201				94%	120	0.60

