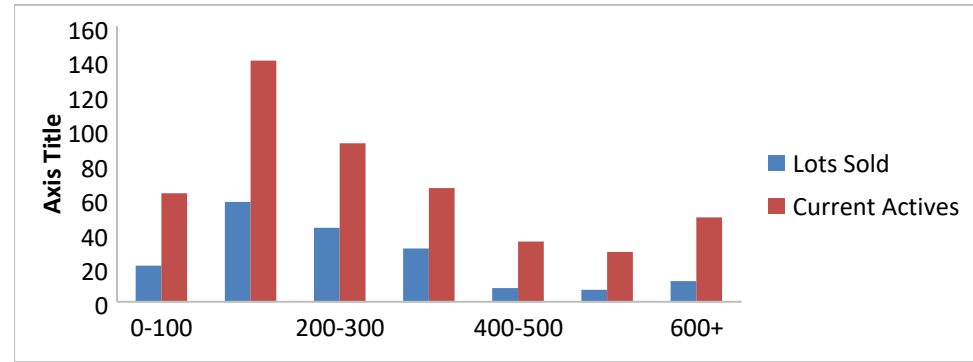


7-1-16--7-1-17 Waterfront Lots on Lake Keowee

	Units Sold	DOM Avg.	Total List Avg	Total Sold Avg	% List/Sale	Current Active	Supply/Yrs
0-100	21	206	\$75,028.00	\$64,950.00	87%	63	3.00
100-200	58	254	\$177,772.00	\$160,843.00	90%	140	2.41
200-300	43	209	\$272,688.00	\$246,794.00	91%	92	2.14
300-400	31	290	\$373,464.00	\$345,090.00	92%	66	2.13
400-500	8	292	\$477,487.00	\$442,062.00	93%	35	4.38
500-600	7	535	\$616,714.00	\$549,162.00	89%	29	4.14
600+	12	456	\$797,700.00	\$711,954.00	89%	49	4.08
Totals	180				84.42%	474	2.63



7-1-16--7-1-17 Waterfront Houses on Lake Keowee

In 1000's	Units Sold	DOM Avg.	List Avg	Sold Avg	List/Sale	Active	Supply/Yrs
200-400	20	240	\$359,554.00	\$329,700.00	92%	10	0.50
400-500	25	115	\$480,407.00	\$446,173.00	93%	8	0.32
500-600	48	125	\$581,716.00	\$553,405.00	95%	11	0.23
600-700	27	143	\$681,186.00	\$652,912.00	96%	19	0.70
700-800	22	90	\$782,672.00	\$742,135.00	95%	11	0.50
800-1000	30	136	\$965,182.00	\$906,020.00	94%	25	0.83
1000-1500	17	145	\$1,330,529.00	\$1,219,811.00	92%	32	1.88
1500-2000	10	209	\$1,778,750.00	\$1,659,250.00	93%	26	2.60
2000-up	3	121	\$2,796,666.00	\$2,104,375.00	75%	17	5.67
Totals	202				90.50%	159	0.79

