

Duke Energy offers tips

for hurricane season

THE JOURNAL STAFF

SENECA — Hurricane season began last week, but preparing for the massive storms never stops for Duke Energy or its customers.

"We have seen the devastation a hurricane can cause in the Carolinas with Hurricane Matthew last year," Duke Energy Carolinas storm director Tim Tripp said. "While we can't control the weather, we do prepare for storms every day of the year. We urge our customers to get ready now so they can react quickly during a storm, hurricane or severe weather that heads our way."

Duke Energy and its staff of meteorologists are constantly monitoring weather conditions, preparing to do whatever is necessary to respond to power outages that impact its customers quickly and safely.

The forecast calls for fewer hurricanes this season. Duke meteorologists predict 13 named storms this year, down from 15 last year and slightly below average. They predict five hurricanes — two major — during the season, which runs from June 1 through Nov. 30.

Duke Energy spokesman Ryan Mosier recommends that customers create or update an emergency-supply kit to save valuable time later.

"The kit should include everything an individual or family would need for at least two weeks, especially medicines and other supplies that might be hard to find after a storm strikes," Mosier said in a news release.

He also suggests maintaining a supply of water and nonperishable

food, ensuring first-aid supplies and medicines are readily available, reviewing insurance policies and including extra copies of the policies and other important documents in the waterproof emergency supply kit.

"Keep a portable radio or TV, or NOAA weather radio, on hand to monitor weather forecasts and official information," he said. "And maintain a plan to move family members — especially those with special needs — to a safe alternate location in case an extended power outage occurs or evacuation is required.

Pet owners can make arrangements to stay at evacuation shelters that accept pets, friends' or family members' homes or pet-friendly hotels.

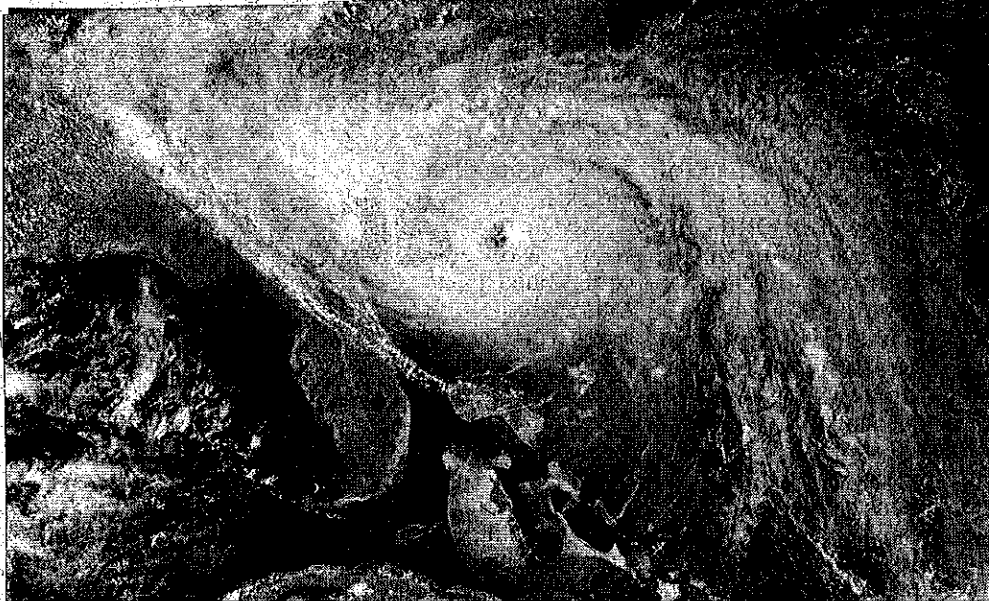
For a hurricane kit checklist, important safety tips and more information on what to do before, during and after a storm, visit duke-energy.com/safety-and-preparedness/storm-safety. For more tips on general emergency preparedness, visit ready.gov.

Duke Energy has invested more than \$2.7

billion in the Carolinas to harden and upgrade its power delivery system since 2004. In addition to trimming trees and inspecting/replacing wood poles, the company has invested in grid automation and smart grid technologies that improve service reliability and reduce the length and number of outages year-round.

"The company is also moving forward with billions of dollars of investments in the Carolinas that include such grid-hardening efforts as moving underground some overhead services that are routinely affected by dense vegetation and retrofitting hundreds of thousands of transformers with new technology to prevent animal interference and lightning strikes," Mosier said.

Customers can report power outages by visiting duke-energy.com, texting OUT to 57801 or calling the automated outage-reporting system at 800-769-3766 for Duke Energy Carolinas customers and 800-419-6356 for Duke Energy Progress customers.



This photo provided by the National Weather Service shows a satellite image of Hurricane Hugo on Sept. 21, 1989, before it made landfall.