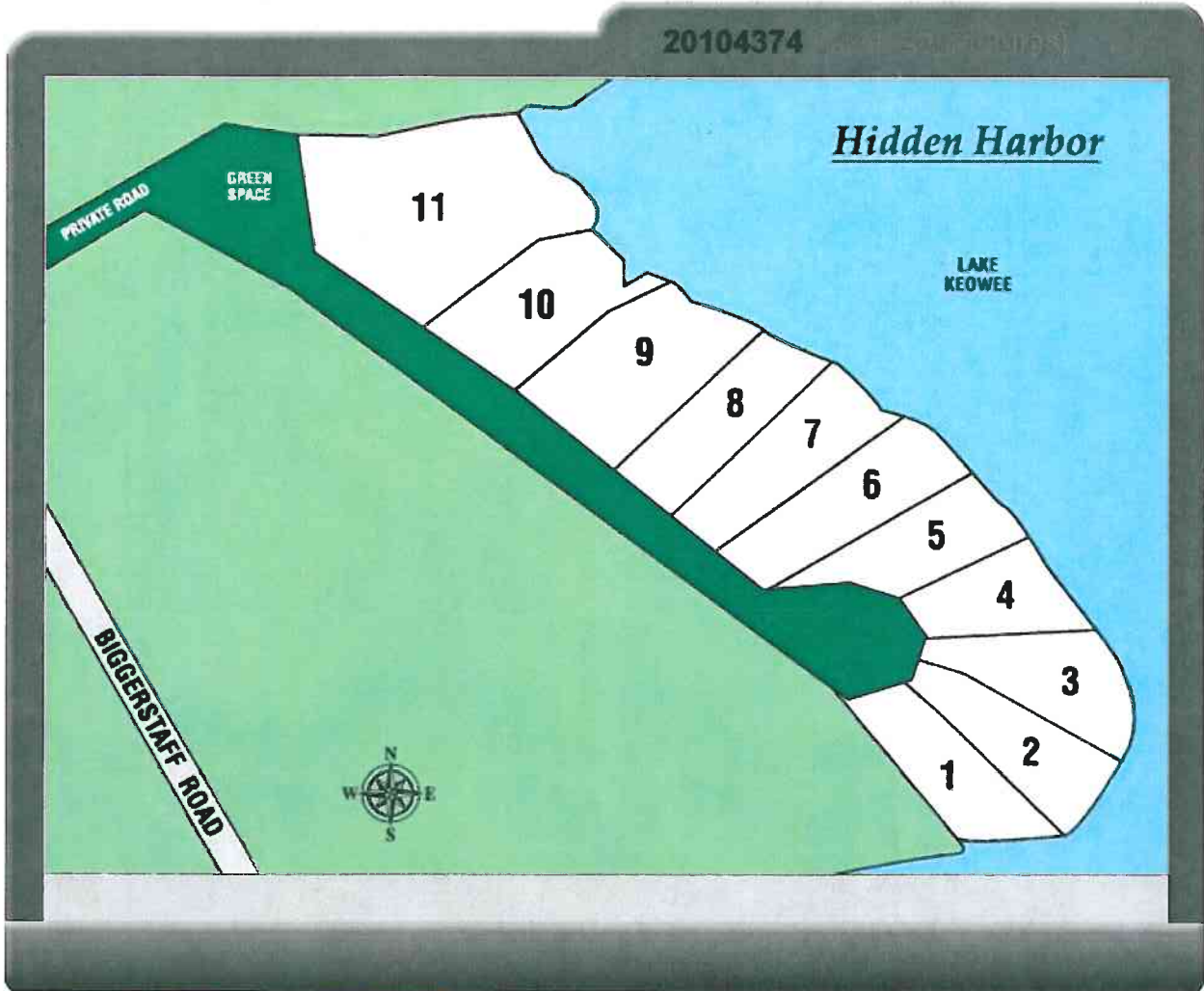


20104374



PLAT PREPARED FOR:

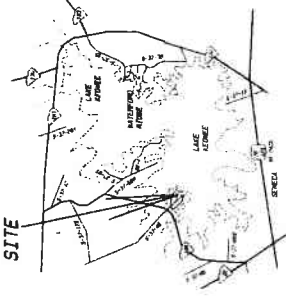
CRESCENT COMMUNITIES S.C., LLC

# HIDDEN HARBOR

SUBDIVISION OF PARCEL OFF. ROAD S-37-46  
REF. DB 9-P PG 41, DB 1462 PG 135  
REF. PB A-466 PG 09  
TIN# 178-00-03-013, -106 6-107

ACREAGE - 15.326 (TOTAL)  
DATE: AUGUST 16, 2007  
STATE OF SOUTH CAROLINA  
COUNTY OF OCONEE  
TOWNSHIP OF SENECA  
SCALE: 1" = 100'

SITE

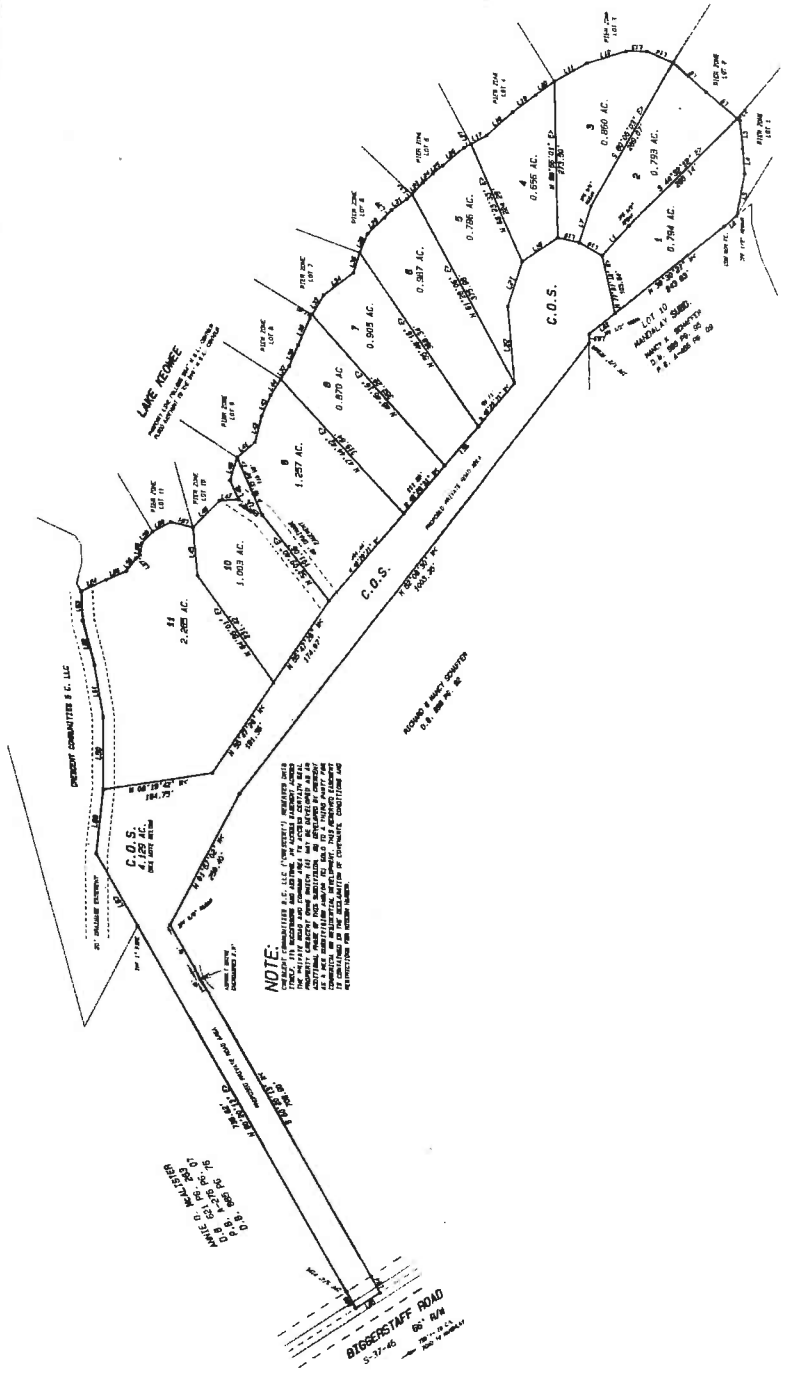


I HEREBY STATE THAT TO THE BEST OF MY KNOWLEDGE, INFORMATION, AND BELIEF, THE SURVEY SHOWN HEREIN WAS MADE IN ACCORDANCE WITH THE REQUIREMENTS OF THE SURVEYING ACTS OF THE STATE OF SOUTH CAROLINA, AND MEETS OR EXCEEDS THE REQUIREMENTS FOR A CLASS B SURVEY AS SPECIFIED THEREIN.  
THERE ARE NO VISIBLE ENCROACHMENTS OR PROJECTIONS OTHER THAN SHOWN.

CALLIGRINI B. SORENSEN  
SENeca, S.C. 29629-0223  
CRESCENT COMMUNITIES S.C., LLC  
GREGORY BLAINE SORENSEN P.L.L.C. S.A. 14818  
P.O. BOX 2705 SENECA, S.C. 29678-0275  
TELEPHONE (803) 582-0004  
PROJECT: 178-00-03-013-106-6-107



1. PROPERTY BOUNDARIES
2. EXISTING AND UTILITY EASEMENTS
3. ALL EASEMENTS AND UTILITY EASEMENTS
4. ALL EASEMENTS AND UTILITY EASEMENTS
5. ALL EASEMENTS AND UTILITY EASEMENTS
6. ALL EASEMENTS AND UTILITY EASEMENTS
7. ALL EASEMENTS AND UTILITY EASEMENTS
8. ALL EASEMENTS AND UTILITY EASEMENTS
9. ALL EASEMENTS AND UTILITY EASEMENTS
10. ALL EASEMENTS AND UTILITY EASEMENTS



**NOTE:**  
CRESCENT COMMUNITIES S.C., LLC (CRESCENT) HAS BEEN ADVISED THAT THE STATE OF SOUTH CAROLINA HAS A POLICY OF ENCOURAGING THE DEVELOPMENT OF RESORTS AND RECREATION AREAS. CRESCENT HAS BEEN ADVISED THAT THE STATE OF SOUTH CAROLINA HAS A POLICY OF ENCOURAGING THE DEVELOPMENT OF RESORTS AND RECREATION AREAS. CRESCENT HAS BEEN ADVISED THAT THE STATE OF SOUTH CAROLINA HAS A POLICY OF ENCOURAGING THE DEVELOPMENT OF RESORTS AND RECREATION AREAS.

LAKE KEOWEE  
PROPERTY LINE FOR THE YEAR 2007  
FROM SURVEY TO THE YEAR 2007



LINE	BEARING	DISTANCE
L1	S 89° 58' 00" W	1.0000
L2	S 89° 58' 00" W	1.0000
L3	S 89° 58' 00" W	1.0000
L4	S 89° 58' 00" W	1.0000
L5	S 89° 58' 00" W	1.0000
L6	S 89° 58' 00" W	1.0000
L7	S 89° 58' 00" W	1.0000
L8	S 89° 58' 00" W	1.0000
L9	S 89° 58' 00" W	1.0000
L10	S 89° 58' 00" W	1.0000
L11	S 89° 58' 00" W	1.0000
L12	S 89° 58' 00" W	1.0000
L13	S 89° 58' 00" W	1.0000
L14	S 89° 58' 00" W	1.0000
L15	S 89° 58' 00" W	1.0000
L16	S 89° 58' 00" W	1.0000
L17	S 89° 58' 00" W	1.0000
L18	S 89° 58' 00" W	1.0000
L19	S 89° 58' 00" W	1.0000
L20	S 89° 58' 00" W	1.0000
L21	S 89° 58' 00" W	1.0000
L22	S 89° 58' 00" W	1.0000
L23	S 89° 58' 00" W	1.0000
L24	S 89° 58' 00" W	1.0000
L25	S 89° 58' 00" W	1.0000
L26	S 89° 58' 00" W	1.0000
L27	S 89° 58' 00" W	1.0000
L28	S 89° 58' 00" W	1.0000
L29	S 89° 58' 00" W	1.0000
L30	S 89° 58' 00" W	1.0000

NOTE: 1/2" REAR SET AT ALL CORNERS UNLESS NOTED.  
NOTE: THIS PROPERTY IS SUBJECT TO ALL EASEMENTS AND RIGHTS OF OTHERS.

