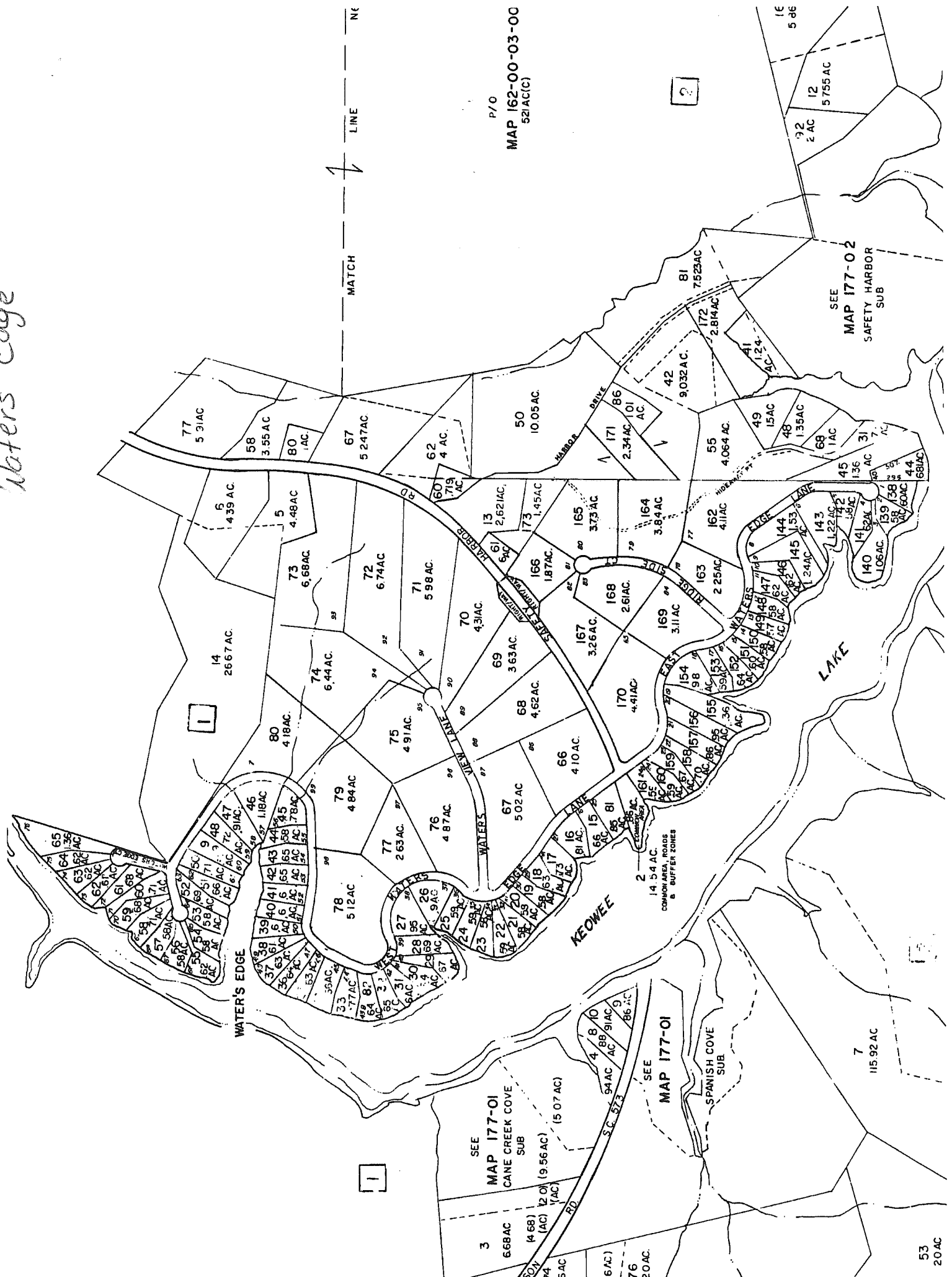


Waters Edge



P/O  
MAP 162-00-03-00  
52/AC(C)

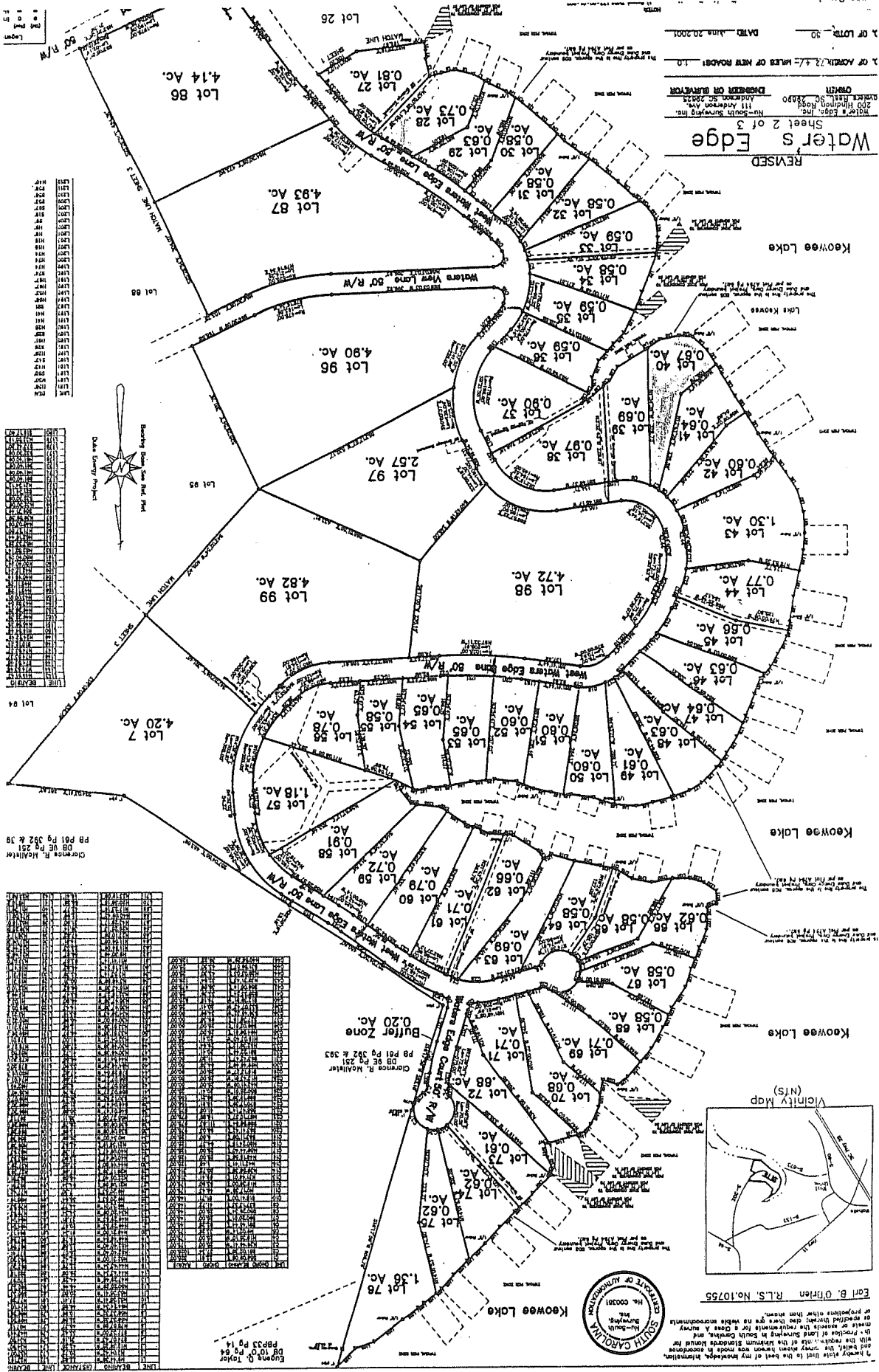
MATCH LINE

SEE  
MAP 177-02  
SAFETY HARBOR  
SUB

SEE  
MAP 177-01  
CANE CREEK COVE  
SUB

SEE  
MAP 177-01  
SPANISH COVE  
SUB

1/8" = 1' (Plan)
1/8" = 1' (Profile)
Legend



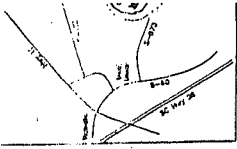
1/8" = 1' (Plan)
1/8" = 1' (Profile)
Legend

1/8" = 1' (Plan)
1/8" = 1' (Profile)
Legend

1/8" = 1' (Plan)
1/8" = 1' (Profile)
Legend

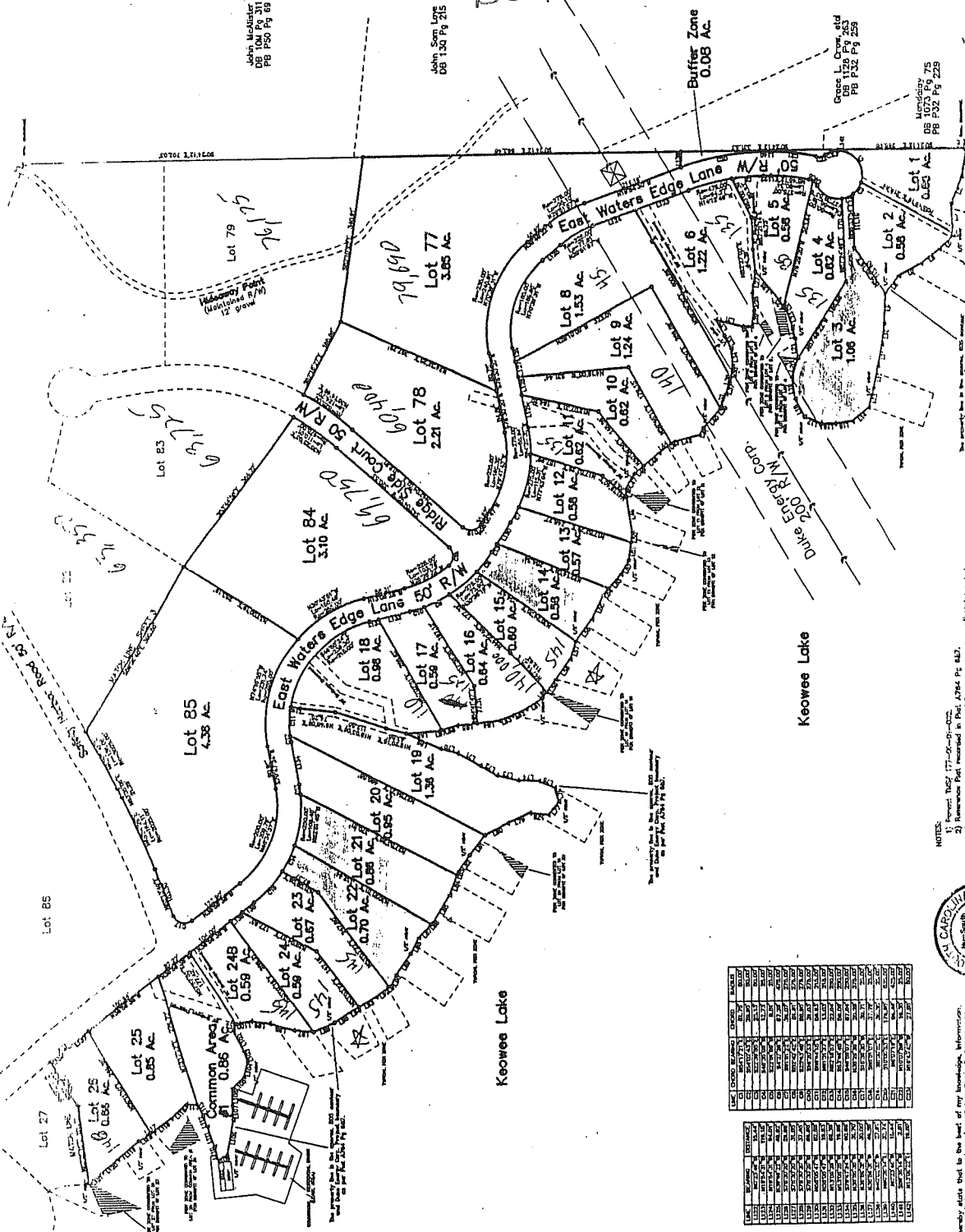
East B. O'Brien R.L.S. No. 10755  
 SOUTH CAROLINA  
 PLANNING & SURVEYING, INC.  
 111 W. 10th St., Suite 200  
 Kansas City, MO 64105  
 DATE: June 20, 2001  
 1. OF LOTS - 30  
 2. OF ADJACENT LOTS - 10

Water's Edge  
 Top



# Waters Edge Bottom

REVI  
**Water's**  
 Sheet 1  
 Date: 10/1/03  
 Prepared by: J. J. ...  
 Checked by: ...  
 No. of Acres: ...  
 No. of Lots: ...  
 Casses County



Lot No.	Acres	Owner	Notes
1	0.83		
2	0.83		
3	1.08		
4	0.82		
5	0.58		
6	1.22		
7	3.85		
8	1.53		
9	1.24		
10	0.82		
11	0.82		
12	0.58		
13	0.57		
14	0.58		
15	0.88		
16	0.84		
17	0.58		
18	0.58		
19	1.38		
20	0.85		
21	0.86		
22	0.86		
23	0.87		
24	0.58		
25	0.85		
26	0.86		
27			
28			
29			
30			
31			
32			
33			
34			
35			
36			
37			
38			
39			
40			
41			
42			
43			
44			
45			
46			
47			
48			
49			
50			
51			
52			
53			
54			
55			
56			
57			
58			
59			
60			
61			
62			
63			
64			
65			
66			
67			
68			
69			
70			
71			
72			
73			
74			
75			
76			
77			
78			
79			
80			
81			
82			
83			
84			
85			
86			
87			
88			
89			
90			
91			
92			
93			
94			
95			
96			
97			
98			
99			
100			

NOTES:  
 1) Project No. 177-200-01-001  
 2) Project No. 177-200-01-002  
 3) All new measurements are on 1/2" grid unless otherwise noted.



I hereby certify that to the best of my knowledge, information and belief, the survey shown hereon was made in accordance with the laws of the State of Wisconsin.

Legend:  
 (Symbol) ...  
 (Symbol) ...  
 (Symbol) ...