

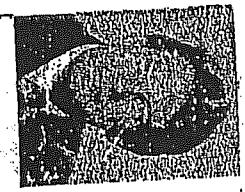
W-D-100
PLAT NO. 2001/0001

THE SUMMIT

SHEET 1 OF 2

LAKE KEOWEE
SHORE LINE BOUNDARY FALLS ON OR ABOVE 80' MSL CONTOUR
POSSIBLE FLOOD EASEMENT TO 810' MSL CONTOUR

John Hamrick Real Estate, Inc.
896 N. Walnut St. @ 123 Bypass
Seneca, SC 29678
(864) 886-0098 Fax (864) 886-0075
1-800-861-4904
email: keowee@aol.com



1	0.74 acres
2	0.70 acres
3	0.69 acres
4	0.69 acres
5	0.66 acres
6	0.69 acres
7	0.69 acres
8	0.69 acres
9	0.69 acres
10	0.69 acres
11	0.69 acres
12	0.69 acres
13	0.69 acres
14	0.69 acres
15	0.69 acres
16	0.69 acres
17	0.69 acres
18	0.69 acres
19	0.66 acres
20	0.71 acres
21	0.66 acres
22	0.70 acres
23	0.66 acres
24	0.66 acres
25	0.70 acres
26	0.70 acres
27	0.66 acres
28	0.70 acres
29	0.70 acres
30	0.72 acres
31	0.62 acres
32	0.63 acres
33	1.48 acres
34	0.63 acres
35	1.43 acres
36	0.74 acres
37	0.65 acres
38	0.79 acres
39	0.79 acres
40	1.06 acres
41	0.66 acres
42	0.99 acres
43	1.31 acres
44	0.71 acres
45	0.88 acres
46	1.46 acres
47	0.88 acres
48	0.88 acres
49	1.13 acres
50	0.74 acres
51	0.74 acres
52	0.63 acres
53	0.70 acres
54	0.66 acres
55	0.71 acres
56	0.66 acres
57	1.38 acres
58	0.94 acres
59	0.76 acres
60	0.63 acres

LAKE KEOWEE
SHORE LINE BOUNDARY FALLS ON OR ABOVE 80' MSL CONTOUR
POSSIBLE FLOOD EASEMENT TO 810' MSL CONTOUR

LAKE KEOWEE
SHORE LINE BOUNDARY FALLS ON OR ABOVE 80' MSL CONTOUR
POSSIBLE FLOOD EASEMENT TO 810' MSL CONTOUR

DESCRIPTION: P/D TRP 909-00-01-051051
DATE: REFERENCE: PLAN 8992, 8970, 8971, 8972, 8973, 8974, 8975, 8976, 8977, 8978
REFERENCE: PLAT BODY PAGE
RECORDS OF OCONEE COUNTY

LOCATION: STATE OF SOUTH CAROLINA
COUNTY OF OCONEE
TOWNSHIP OF SENECA
CITY OF

AREA OF PARCEL: AS NOTED
DATE: SEPTEMBER 4, 1995

PLAT PREPARED FOR:
CRESCENT RESOURCES, INC.

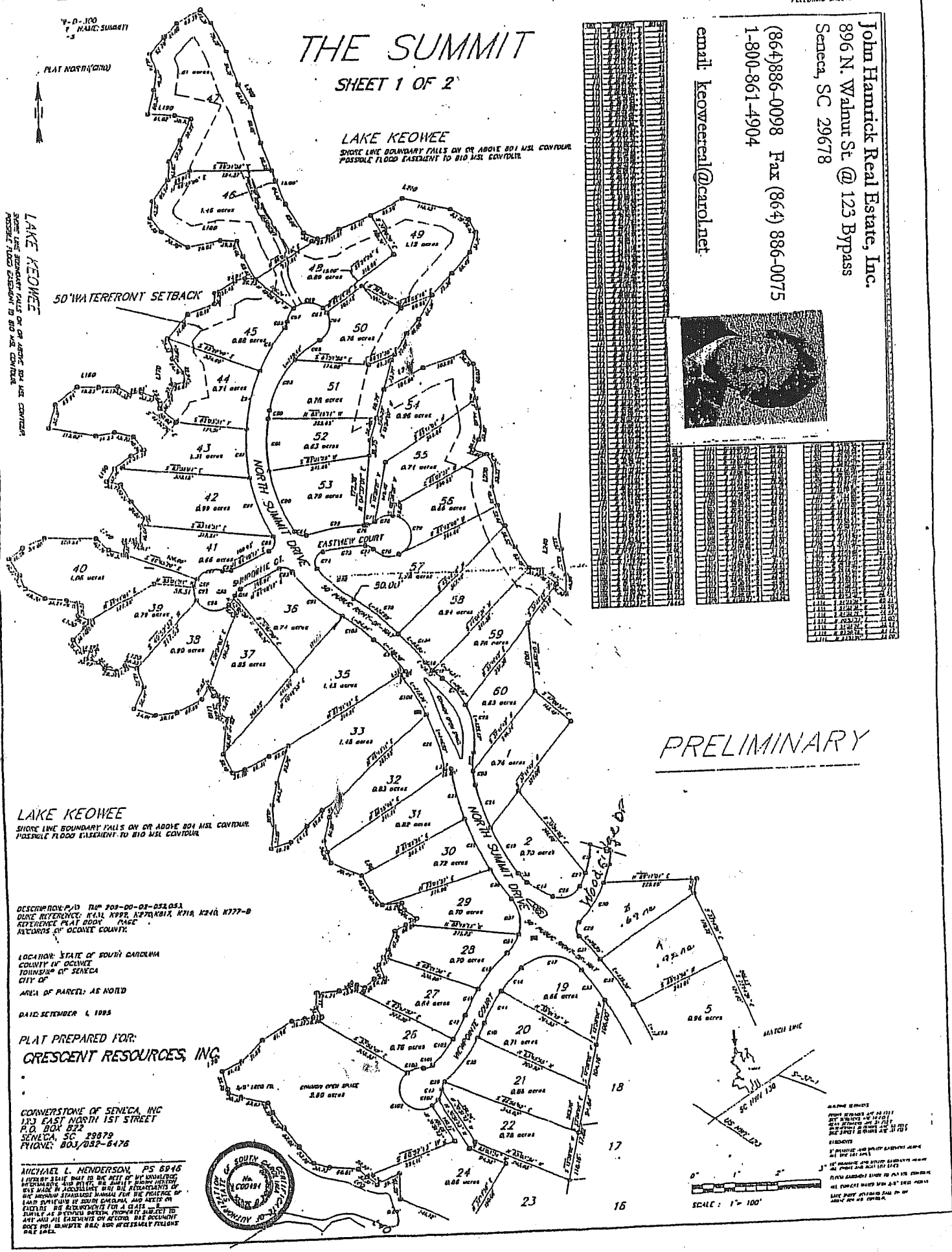
CONVEYOR: SENECA, INC
123 EAST NORTH 1ST STREET
P.O. BOX 822
SENECA, SC 29679
PHONE: 803/882-6476

MICHAEL L. HENDERSON, PS 6946
LICENSED SURVEYOR
I HEREBY CERTIFY THAT TO THE BEST OF MY KNOWLEDGE AND BELIEF, THE SURVEYING INFORMATION AND DATA HEREON WERE OBTAINED BY ME OR UNDER MY CLOSE PERSONAL SUPERVISION AND THAT I AM A LICENSED SURVEYOR IN THE STATE OF SOUTH CAROLINA AND THAT I AM NOT PROVIDING THIS SERVICE FOR A CLIENT OR UNDER THE EMPLOYMENT OF ANOTHER PERSON OR ENTITY AND THAT I AM PROVIDING THIS SERVICE TO YOU AS AN INDIVIDUAL AND NOT AS AN AGENT OF ANY OTHER ENTITY.



PRELIMINARY

SCALE: 1" = 100'
MATCH LINE
SC 1994 130



PHASE 3 THE SUMMIT

LOTS 89 THROUGH 123

Comments

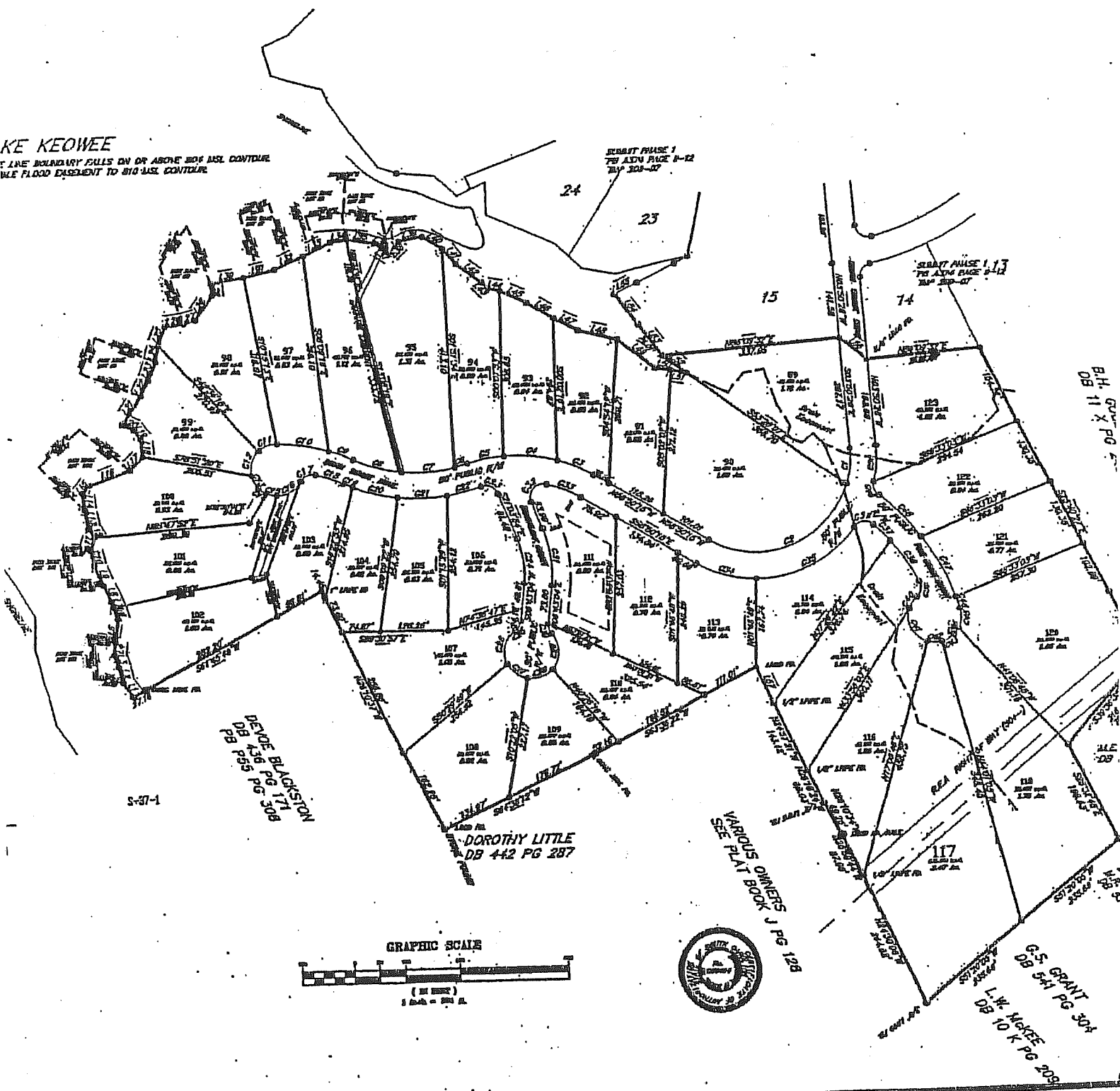
1. 50' Driveways and utility easements along all side lot lines
2. 100' Driveways and utility easements along all front and rear lot lines (except along waterway)
3. Flood easement shown to 510' ASL contour
4. All roads have a 50.0' right-of-way

Building Setbacks

1. Front setbacks are 50.0' from public right-of-way
2. Side setbacks are 10.0' from property line
3. Rear setbacks are 35.0' from property line
4. Easement setbacks are 50.0' measured from the 510' ASL contour

KE KEOWEE

5' LINE BOUNDARY FILLS ON OR ABOVE 504' ASL CONTOUR
W/LE FLOOD EASEMENT TO 510' ASL CONTOUR



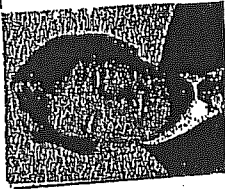
GRAPHIC SCALE



VARIOUS OWNERS
SEE PLAT BOOK J PG 128

G.S. GRANT
DB 541 PG 304
L.W. McKEE
DB 10 K PG 209

John Hamrick Real Estate, Inc.
 896 N. Walnut St @ 123 Bypass
 Seneca, SC 29678



(864) 886-0098 Fax (864) 886-0075
 1-800-861-4904

email: keowreale@carol.net

1	10	19	28
2	11	20	29
3	12	21	30
4	13	22	31
5	14	23	32
6	15	24	33
7	16	25	34
8	17	26	35
9	18	27	36
10	19	28	37
11	20	29	38
12	21	30	39
13	22	31	40
14	23	32	41
15	24	33	42
16	25	34	43
17	26	35	44
18	27	36	45
19	28	37	46
20	29	38	47
21	30	39	48
22	31	40	49
23	32	41	50
24	33	42	51
25	34	43	52
26	35	44	53
27	36	45	54
28	37	46	55
29	38	47	56
30	39	48	57
31	40	49	58
32	41	50	59
33	42	51	60
34	43	52	61
35	44	53	62
36	45	54	63
37	46	55	64
38	47	56	65
39	48	57	66
40	49	58	67
41	50	59	68
42	51	60	69
43	52	61	70
44	53	62	71
45	54	63	72
46	55	64	73
47	56	65	74
48	57	66	75
49	58	67	76
50	59	68	77
51	60	69	78
52	61	70	79
53	62	71	80
54	63	72	81
55	64	73	82
56	65	74	83
57	66	75	84
58	67	76	85
59	68	77	86
60	69	78	87
61	70	79	88
62	71	80	89
63	72	81	90
64	73	82	91
65	74	83	92
66	75	84	93
67	76	85	94
68	77	86	95
69	78	87	96
70	79	88	97
71	80	89	98
72	81	90	99
73	82	91	100

1	10	19	28
2	11	20	29
3	12	21	30
4	13	22	31
5	14	23	32
6	15	24	33
7	16	25	34
8	17	26	35
9	18	27	36
10	19	28	37
11	20	29	38
12	21	30	39
13	22	31	40
14	23	32	41
15	24	33	42
16	25	34	43
17	26	35	44
18	27	36	45
19	28	37	46
20	29	38	47
21	30	39	48
22	31	40	49
23	32	41	50
24	33	42	51
25	34	43	52
26	35	44	53
27	36	45	54
28	37	46	55
29	38	47	56
30	39	48	57
31	40	49	58
32	41	50	59
33	42	51	60
34	43	52	61
35	44	53	62
36	45	54	63
37	46	55	64
38	47	56	65
39	48	57	66
40	49	58	67
41	50	59	68
42	51	60	69
43	52	61	70
44	53	62	71
45	54	63	72
46	55	64	73
47	56	65	74
48	57	66	75
49	58	67	76
50	59	68	77
51	60	69	78
52	61	70	79
53	62	71	80
54	63	72	81
55	64	73	82
56	65	74	83
57	66	75	84
58	67	76	85
59	68	77	86
60	69	78	87
61	70	79	88
62	71	80	89
63	72	81	90
64	73	82	91
65	74	83	92
66	75	84	93
67	76	85	94
68	77	86	95
69	78	87	96
70	79	88	97
71	80	89	98
72	81	90	99
73	82	91	100

THE SUMMIT

SHEET 2 OF 2

PLEASE SEE SHEET 1 FOR THE MAPS AND OTHER REFERENCE NOTES.

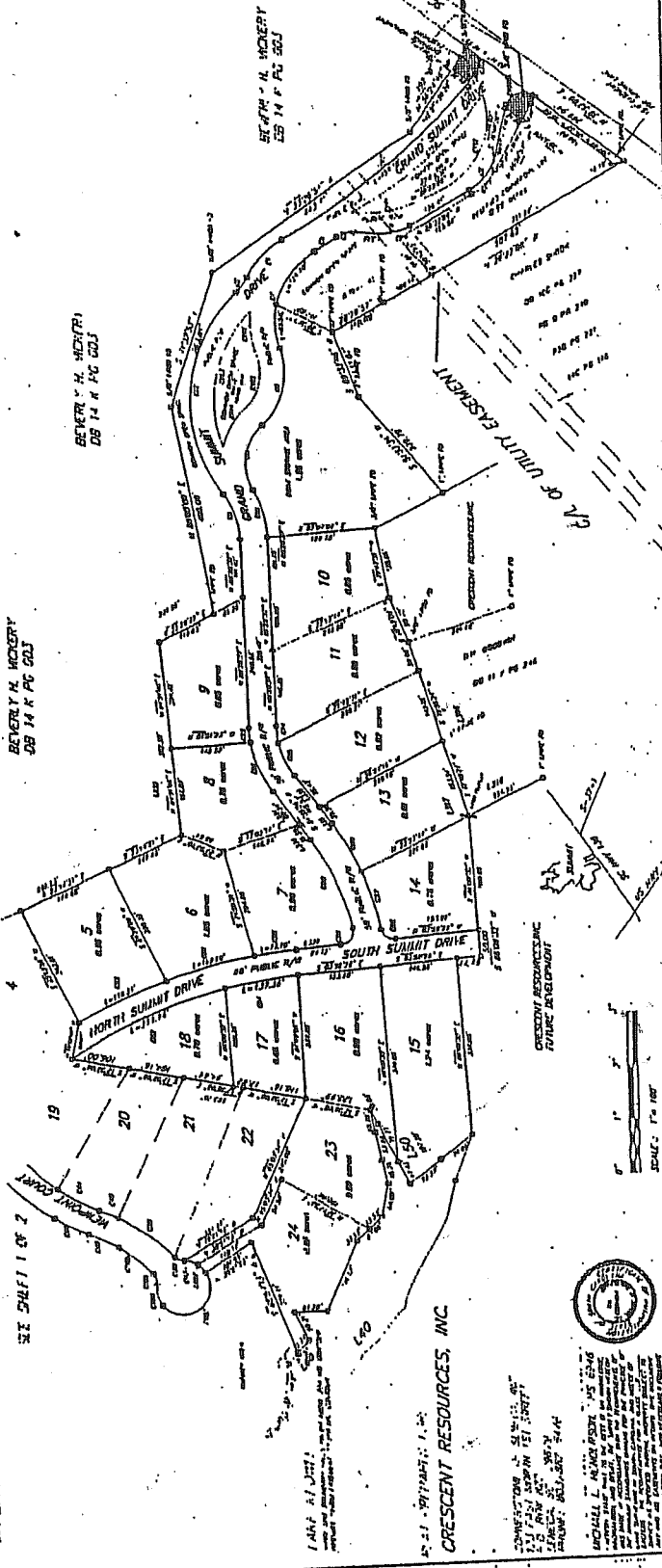
CRESCENT RESOURCES, INC.
 1000 W. 10th Street, Suite 100
 Oklahoma City, Oklahoma 73106
 Phone: (405) 521-1111
 Fax: (405) 521-1112
 Website: www.crescentresources.com

SECTION 240, 241, 242, 243, 244, 245, 246, 247, 248, 249, 250, 251, 252, 253, 254, 255, 256, 257, 258, 259, 260, 261, 262, 263, 264, 265, 266, 267, 268, 269, 270, 271, 272, 273, 274, 275, 276, 277, 278, 279, 280, 281, 282, 283, 284, 285, 286, 287, 288, 289, 290, 291, 292, 293, 294, 295, 296, 297, 298, 299, 300, 301, 302, 303, 304, 305, 306, 307, 308, 309, 310, 311, 312, 313, 314, 315, 316, 317, 318, 319, 320, 321, 322, 323, 324, 325, 326, 327, 328, 329, 330, 331, 332, 333, 334, 335, 336, 337, 338, 339, 340, 341, 342, 343, 344, 345, 346, 347, 348, 349, 350, 351, 352, 353, 354, 355, 356, 357, 358, 359, 360, 361, 362, 363, 364, 365, 366, 367, 368, 369, 370, 371, 372, 373, 374, 375, 376, 377, 378, 379, 380, 381, 382, 383, 384, 385, 386, 387, 388, 389, 390, 391, 392, 393, 394, 395, 396, 397, 398, 399, 400, 401, 402, 403, 404, 405, 406, 407, 408, 409, 410, 411, 412, 413, 414, 415, 416, 417, 418, 419, 420, 421, 422, 423, 424, 425, 426, 427, 428, 429, 430, 431, 432, 433, 434, 435, 436, 437, 438, 439, 440, 441, 442, 443, 444, 445, 446, 447, 448, 449, 450, 451, 452, 453, 454, 455, 456, 457, 458, 459, 460, 461, 462, 463, 464, 465, 466, 467, 468, 469, 470, 471, 472, 473, 474, 475, 476, 477, 478, 479, 480, 481, 482, 483, 484, 485, 486, 487, 488, 489, 490, 491, 492, 493, 494, 495, 496, 497, 498, 499, 500, 501, 502, 503, 504, 505, 506, 507, 508, 509, 510, 511, 512, 513, 514, 515, 516, 517, 518, 519, 520, 521, 522, 523, 524, 525, 526, 527, 528, 529, 530, 531, 532, 533, 534, 535, 536, 537, 538, 539, 540, 541, 542, 543, 544, 545, 546, 547, 548, 549, 550, 551, 552, 553, 554, 555, 556, 557, 558, 559, 560, 561, 562, 563, 564, 565, 566, 567, 568, 569, 570, 571, 572, 573, 574, 575, 576, 577, 578, 579, 580, 581, 582, 583, 584, 585, 586, 587, 588, 589, 590, 591, 592, 593, 594, 595, 596, 597, 598, 599, 600, 601, 602, 603, 604, 605, 606, 607, 608, 609, 610, 611, 612, 613, 614, 615, 616, 617, 618, 619, 620, 621, 622, 623, 624, 625, 626, 627, 628, 629, 630, 631, 632, 633, 634, 635, 636, 637, 638, 639, 640, 641, 642, 643, 644, 645, 646, 647, 648, 649, 650, 651, 652, 653, 654, 655, 656, 657, 658, 659, 660, 661, 662, 663, 664, 665, 666, 667, 668, 669, 670, 671, 672, 673, 674, 675, 676, 677, 678, 679, 680, 681, 682, 683, 684, 685, 686, 687, 688, 689, 690, 691, 692, 693, 694, 695, 696, 697, 698, 699, 700, 701, 702, 703, 704, 705, 706, 707, 708, 709, 710, 711, 712, 713, 714, 715, 716, 717, 718, 719, 720, 721, 722, 723, 724, 725, 726, 727, 728, 729, 730, 731, 732, 733, 734, 735, 736, 737, 738, 739, 740, 741, 742, 743, 744, 745, 746, 747, 748, 749, 750, 751, 752, 753, 754, 755, 756, 757, 758, 759, 760, 761, 762, 763, 764, 765, 766, 767, 768, 769, 770, 771, 772, 773, 774, 775, 776, 777, 778, 779, 780, 781, 782, 783, 784, 785, 786, 787, 788, 789, 790, 791, 792, 793, 794, 795, 796, 797, 798, 799, 800, 801, 802, 803, 804, 805, 806, 807, 808, 809, 810, 811, 812, 813, 814, 815, 816, 817, 818, 819, 820, 821, 822, 823, 824, 825, 826, 827, 828, 829, 830, 831, 832, 833, 834, 835, 836, 837, 838, 839, 840, 841, 842, 843, 844, 845, 846, 847, 848, 849, 850, 851, 852, 853, 854, 855, 856, 857, 858, 859, 860, 861, 862, 863, 864, 865, 866, 867, 868, 869, 870, 871, 872, 873, 874, 875, 876, 877, 878, 879, 880, 881, 882, 883, 884, 885, 886, 887, 888, 889, 890, 891, 892, 893, 894, 895, 896, 897, 898, 899, 900, 901, 902, 903, 904, 905, 906, 907, 908, 909, 910, 911, 912, 913, 914, 915, 916, 917, 918, 919, 920, 921, 922, 923, 924, 925, 926, 927, 928, 929, 930, 931, 932, 933, 934, 935, 936, 937, 938, 939, 940, 941, 942, 943, 944, 945, 946, 947, 948, 949, 950, 951, 952, 953, 954, 955, 956, 957, 958, 959, 960, 961, 962, 963, 964, 965, 966, 967, 968, 969, 970, 971, 972, 973, 974, 975, 976, 977, 978, 979, 980, 981, 982, 983, 984, 985, 986, 987, 988, 989, 990, 991, 992, 993, 994, 995, 996, 997, 998, 999, 1000.

SEE SHEET 1 OF 2

SEE SHEET 1 OF 2

SEE SHEET 1 OF 2



CRESCENT RESOURCES, INC.
 1000 W. 10th Street, Suite 100
 Oklahoma City, Oklahoma 73106
 Phone: (405) 521-1111
 Fax: (405) 521-1112
 Website: www.crescentresources.com