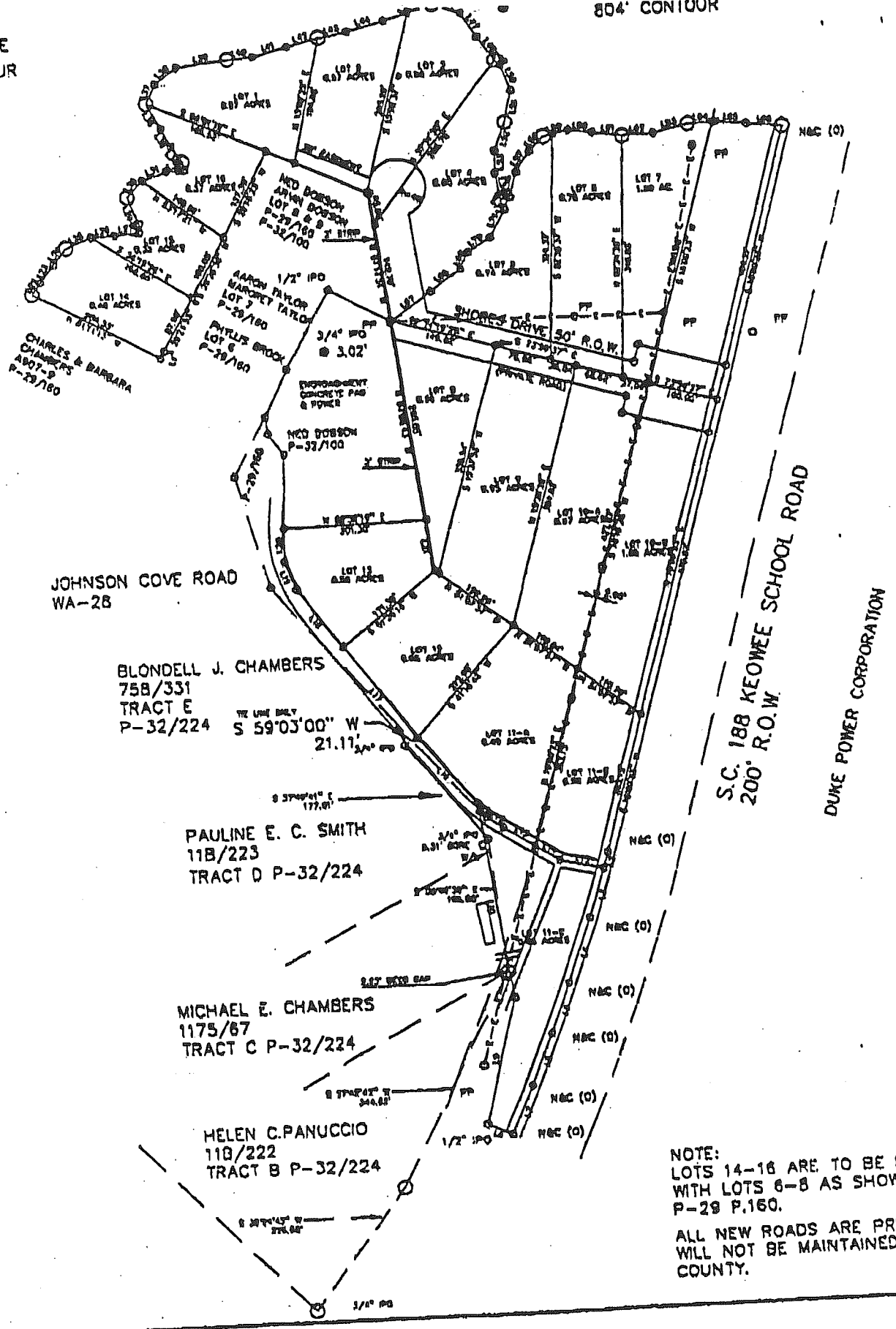


Keowee Shores

804' CONTOUR

KEOWEE LAKE
14' CONTOUR



CHARLES & BARBARA
CHAMBERS
A-97-9
P-29/160

JOHNSON COVE ROAD
WA-28

BLONDELL J. CHAMBERS
75B/331
TRACT E
P-32/224

PAULINE E. C. SMITH
11B/223
TRACT D P-32/224

MICHAEL E. CHAMBERS
1175/87
TRACT C P-32/224

HELEN C. PANUCCIO
11B/222
TRACT B P-32/224

S.C. 188 KEOWEE SCHOOL ROAD
200' R.O.W.

DUKE POWER CORPORATION

NOTE:
LOTS 14-18 ARE TO BE RECOMBINED
WITH LOTS 6-8 AS SHOWN IN
P-29 P.160.

ALL NEW ROADS ARE PRIVATE AND
WILL NOT BE MAINTAINED BY OCONEE
COUNTY.

SEE PLAT A-97-9

MENTS.
SES.