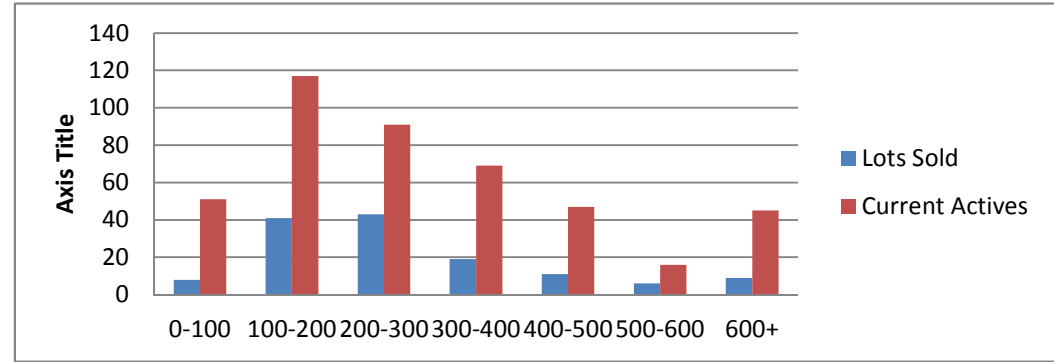


3-3-14--3-3-15 Water Front Lots Sold On Lake Keowee

	Units Sold	DOM Avg.	Total List Avg	Total Sold Avg	% List/Sale	Current Active	Supply/Yrs
0-100	8	226	\$57,525.00	\$49,312.00	86%	51	6.38
100-200	41	239	\$178,570.00	\$156,975.00	88%	117	2.85
200-300	43	184	\$275,379.00	\$249,583.00	91%	91	2.12
300-400	19	213	\$362,968.00	\$329,763.00	91%	69	3.63
400-500	11	444	\$497,090.00	\$443,590.00	89%	47	4.27
500-600	6	369	\$719,000.00	\$550,833.00	77%	16	2.67
600+	9	354	\$1,189,333.00	\$946,000.00	80%	45	5.00
Totals	137				84.42%	436	3.18



3-3-14--3-3-15 Waterfront Homes on Lake Keowee

In 1000's	Units Sold	DOM Avg.	List Avg	Sold Avg	List/Sale	Active	Supply/Yrs
250-400	20	219	\$372,940.00	\$353,313.00	95%	15	0.75
400-500	31	174	\$486,158.00	\$452,353.00	93%	21	0.68
500-600	23	171	\$587,283.00	\$552,227.00	94%	18	0.78
600-700	20	239	\$716,014.00	\$652,525.00	91%	24	1.20
700-800	16	163	\$788,662.00	\$743,531.00	94%	20	1.25
800-1000	15	162	\$968,853.00	\$895,933.00	92%	28	1.87
1000-1500	9	238	\$1,406,888.00	\$1,271,166.00	90%	25	2.78
1500-2000	9	316	\$1,773,500.00	\$1,622,444.00	91%	27	3.00
2000-up	2	207	\$2,695,000.00	\$2,372,500.00	88%	10	5.00
Totals	145				90.50%	188	1.30

