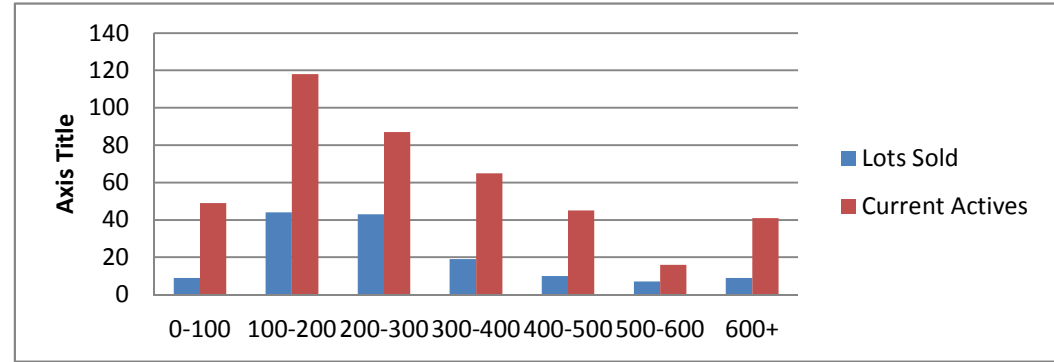


2-12-14--2-12-15 Water Front Lots Sold On Lake Keowee

	Units Sold	DOM Avg.	Total List Avg	Total Sold Avg	% List/Sale	Current Active	Supply/Yrs
0-100	9	259	\$63,511.00	\$54,377.00	86%	49	5.44
100-200	44	232	\$175,029.00	\$152,247.00	87%	118	2.68
200-300	43	186	\$274,681.00	\$249,523.00	91%	87	2.02
300-400	19	213	\$362,968.00	\$329,763.00	91%	65	3.42
400-500	10	468	\$496,900.00	\$446,450.00	90%	45	4.50
500-600	7	368	\$723,428.00	\$554,285.00	77%	16	2.29
600+	9	354	\$1,189,333.00	\$946,000.00	80%	41	4.56
Totals	141				84.42%	421	2.99



2-12-14--2-12-154 Waterfront Homes on Lake Keowee

In 1000's	Units Sold	DOM Avg.	List Avg	Sold Avg	List/Sale	Active	Supply/Yrs
250-400	21	184	\$368,057.00	\$349,703.00	95%	18	0.86
400-500	32	172	\$482,687.00	\$448,904.00	93%	21	0.66
500-600	20	180	\$596,631.00	\$560,111.00	94%	22	1.10
600-700	21	233	\$712,871.00	\$650,023.00	91%	25	1.19
700-800	18	163	\$798,255.00	\$742,027.00	93%	20	1.11
800-1000	16	175	\$963,862.00	\$889,941.00	92%	26	1.63
1000-1500	7	265	\$1,404,571.00	\$1,310,071.00	93%	25	3.57
1500-2000	9	316	\$1,773,500.00	\$1,622,444.00	91%	26	2.89
2000-up	2	207	\$2,695,000.00	\$2,372,500.00	88%	9	4.50
Totals	146				90.50%	192	1.32

